

Unified Government of Wyandotte County and Kansas City, Kansas



Public Works & Safety Standing Committee

Fifth Floor Conference Room

701 N. 7th Street Trafficway, Kansas City, KS 66101

Chair Andrew Kump

Commissioner, District 2 - Bill Burns, Commissioner, District 3- Christian Ramirez

Commissioner, District 4 - Evelyn Hill, Commissioner, District 6 - Phil Lopez

AGENDA

Monday, March 16, 2026

5:00 PM

- 1. Call to Order/Roll Call**
- 2. Revisions to March 16, 2026, Agenda**
- 3. Approval of standing committee minutes from March 24 and June 23, 2025, and January 28, 2026**
- 4. Committee Agenda**
 - 4.1 PRESENTATION: SAFE STREETS FOR ALL (SS4A) VISION ZERO ACTION PLAN**

Synopsis: The Vision Zero Action Plan establishes a data-driven strategy to eliminate traffic fatalities and severe injuries while advancing equity, sustainability, and economic development. The Public Works and Planning Department will present a list of projects for the plan and request authorization to submit for grant applications.

Tracking #: 21179
 - 4.2 PRESENTATION: STORMWATER UTILITY RATES**

Synopsis: The Public Works Department will present the enterprise utility funds and proposed rate options for 2026 and 2027, including an overview of each option and the associated outcomes.

Tracking #: 21176
 - 4.3 PRESENTATION: SANITARY SEWER UTILITY RATES**

Synopsis: The Public Works Department will present the enterprise utility funds and proposed rate options for 2026 and 2027, including an overview of each option and the associated outcomes.

Tracking #: 21177

4.4 **PRESENTATION: SOLID WASTE UTILITY RATES**

Synopsis: The Public Works Department will present the enterprise utility funds and proposed rate options for 2026 and 2027, including an overview of each option and the associated outcomes.

Tracking #: 21178

4.5 **APPROVAL: MARC GRANT FUNDING**

Synopsis: Discussion to inform commission of the plan to submit for this round of grants through the Mid-American Regional Council (MARC). Due to the short timeline, the Commission will be advised regarding the process for applying for projects and then, if awarded, successful projects will be brought to the commission to formally accept the grant.

For Information Only

Tracking #: 21193

5. Public Agenda

6. Adjourn

The Unified Government of Wyandotte County and Kansas City, Kansas will provide necessary, reasonable auxiliary aids and services, such as ASL translators, machine-readable copies of meeting materials, or on-site language interpretation. Individuals requiring any auxiliary aids or services should contact the Unified Government Office of the Clerk by emailing or calling UGclerkrequest@wycokck.org or 913-573-5260 at least 48 hours in advance of the meeting. Persons may address the Commission during the time set aside for Public Comment on each item scheduled or at any time by suspension of the rules. All persons must address the commission and state their name and address for the record. Comments shall be limited to three (3) minutes for each participant. Disruptive comments and behavior are not permitted and may result in removal from the meeting.

Some commissioners, staff, and the public may attend remotely via Zoom or by phone. All participants joining by phone should mute their phones when not speaking to avoid background noise. During the meeting, all speakers are asked to please announce yourself by name and title every time you speak so the public that is observing knows who is speaking. This is critical given the number of remote participants and is current guidance from the Kansas Attorney General.

El Gobierno Unificado del Condado de Wyandotte y Kansas City, Kansas, proporcionará ayudas y servicios auxiliares necesarios y razonables, como traductores de ASL, copias legibles por máquina de los materiales de la reunión o interpretación de idiomas en el lugar. Las personas que requieran ayuda o servicios auxiliares deben comunicarse con la Oficina del Secretario del Gobierno Unificado enviando un correo electrónico o llamando al UGclerkrequest@wycokck.org o al 913-573-5260 al menos 48 horas antes de la reunión.

Join from PC, Mac, iPad, or Android:

<https://wycokck.zoom.us/j/89749786825>

Webinar ID: 897 4978 6825

Phone one-tap:

+17193594580,,89749786825# US

+12532050468,,89749786825# US

Join via audio:

+1 719 359 4580 US, +1 253 205 0468 US, +1 253 215 8782 US (Tacoma), +1 346 248 7799 US (Houston), +1 669 444 9171 US, +1 669 900 9128 US (San Jose), +1 386 347 5053 US, +1 507 473 4847 US, +1 564 217 2000 US, +1 646 558 8656 US (New York), +1 646 931 3860 US, +1 689 278 1000 US, +1 301 715 8592 US (Washington DC), +1 305 224 1968 US, +1 309 205 3325 US, +1 312 626 6799 US (Chicago), +1 360 209 5623 US, 888 475 4499 US Toll Free, 877 853 5257 US Toll Free
International numbers available: <https://wycokck.zoom.us/j/kcYwX87Pex>

Cell phones may mute and unmute by dialing *6.

Raise and lower your hand to be acknowledged by dialing *9.

To raise your digital hand from your PC or Mac, click the button labeled “Raise Hand” at the bottom of the window on the right side of the screen.

View the meeting live on our website at: [UGTV Live Stream](#) or via [YouTube](#).

Unified Government of Wyandotte County and Kansas City, Kansas



Public Works and Safety Meeting

5th Floor Conference Room

701 N. 7th Street Trafficway, Kansas City, KS 66101

Commissioner Tom Burroughs, Chair

Commissioner Mike Kane – Commissioner Chuck Stites –

Commissioner Bill Burns – Commissioner Phil Lopez –

MINUTES

Monday, March 24, 2025

5:01 PM-6:30 PM

Attendance:

Committee Members Present:

- Commissioner Burroughs (Chair)
- Commissioner Lopez
- Commissioner Stites
- Commissioner Burns
- Commissioner Kane
- Ms. Gonzalez (BPU Board Member)

Committee Members Absent:

- None

Staff Present:

- Brittnie MacDonald (Unified Government Clerk's Office)
- Sheriff Daniel Soptic (Wyandotte County Sheriff)
- Dan Kuhn (Legal Department)
- Dr. Shelley Kneuvean (Chief Financial Officer)
- Phil Lockman (Director of Community Corrections)
- Mark Dupree (District Attorney)

- Troy Shaw (Director of Public Works)
- Chris Finger (Public Works Engineer)
- Diana Miles (Solid Waste Manager)
- Jeff Miles (Director of Environmental Services)
- Rodney Lucas (Assistant County Administrator)

Call to Order:

Commissioner Burroughs called the meeting to order at 5:01 PM.

Revisions to Agenda:

No revisions to the agenda were reported.

Approval of Previous Minutes: (Discussion Begins 3:49)

Commissioner Kane moved to approve the minutes from the March 25, 2024, meeting. The motion was seconded by Commissioner Stites.

Vote: Motion carries 6-0

- Ayes: Gonzalez, Lopez, Stites, Burns, Kane, Burroughs
- Nays: None
- Absent: None

Committee Agenda:

Item 1: RESOLUTION: RATIFYING PER DIEM RATES OF THE WYANDOTTE COUNTY SHERIFF (Discussion Begins 4:26)

Sheriff Daniel Soptic presented the item.

Key points:

- The Kansas Department of Corrections changed its process, now requiring the Governing Board to pass a resolution or ordinance to set per diem rates.
- Previously, the sheriff's office simply requested and received the maximum allowed rate from the state.
- The per diem rate increased from \$95.17 to \$107.02 per day.

- The new procedure is a formal requirement but does not substantially change reimbursement practices.

Commissioner Kane moved to adopt the resolution. The motion was seconded by Commissioner Burns.

Vote: Motion carries 6-0

- Ayes: Gonzalez, Lopez, Stites, Burns, Kane, Burroughs
- Nays: None
- Absent: None

Item 2: UPDATE: REVISED INITIATIVES FOR STATE OF KANSAS OPIOID FUNDING (Discussion Begins 7:00)

Shelley Kneuvean, Chief Financial Officer, provided an informational update on modifications to opioid settlement fund allocations totaling approximately \$1.1 million of \$1.9 million received. Phil Lockman explained Community Corrections moved \$40,000 from training to treatment programs. District Attorney Dupree reduced his request from \$236,000 to \$206,000, changing from a prosecuting attorney position to a coordinator and victim advocate positions.

Key points:

- The county received opioid settlement funds beginning in 2021, totaling about \$1.9 million, governed by an MOU specifying eligible uses (victim support, drug abuse education, prevention).
- Funds cannot be used for supply/distribution enforcement (per the MOU).
- About \$1.1 million was proposed for 2025 uses, but not all funds are appropriated at once to ensure sustainability.
- Personal hired under these funds are required to sign agreements acknowledging their position ends if funding ends.

The Chairman opened the public hearing. No comments were received. The Chairman closed the public hearing.

This item was for information only, and no action was required.

Item 3: RESOLUTION: SURVEY FOR 55TH & METROPOLITAN INTERSECTION IMPROVEMENTS (Discussion Begins 15:08)

Troy Shaw and Chris Finger, both from the Public Works Department, presented a resolution authorizing survey and property acquisition discussions for intersection improvements funded by KDOT grant.

Key points:

- The resolution is a procedural step authorizing surveys and the ability to negotiate with property owners to acquire necessary right-of-way and easements for the intersection improvement project.
- The project will upgrade the 55th and Metropolitan intersection, funded by a KDOT grant, with plans to widen lanes on all sides.
- Approval does not commit the city to spending or property acquisition; it simply allows staff to start discussions with property owners.
- Eminent domain authority is not granted at this stage; future commission approval would be required if condemnation is needed.

The Chairman opened the public hearing. No comments were received. The Chairman closed the public hearing.

Commissioner Kane moved to adopt the resolution. The motion was seconded by Commissioner Lopez.

Vote: Motion carries 6-0

- Ayes: Gonzalez, Lopez, Stites, Burns, Kane, Burroughs
- Nays: None
- Absent: None

Item 4: RESOLUTION: SURVEY OF 98TH & STATE AVE (Discussion Begins 20:02)

Chris Finger, Public Works, presented intersection improvements coordinated with KDOT's I-435 interchange project and related to Homefield development.

Key points:

- The project aims to upgrade the intersection with turn lanes, ADA improvements, and signal enhancements.
- Improvements are coordinated with a KDOT interchange project at I-435 and ongoing area development (e.g., Homefield).
- Preliminary design work considers the alignment and potential realignment of 98th Street to the south, in anticipation of future KDOT projects.
- The resolution allows the city to begin surveying and negotiating with property owners for necessary easements/land.
- No commitment to property acquisition or funding is made at this stage—action is for procedural authorization only.

- The project is designed to accommodate future traffic needs and safety concerns based on local input.

The Chairman opened the public hearing. No comments were received. The Chairman closed the public hearing.

Commissioner Stites moved to adopt the resolution. The motion was seconded by Commissioner Lopez.

Vote: Motion carries 6-0

- Ayes: Gonzalez, Lopez, Stites, Burns, Kane, Burroughs
- Nays: None
- Absent: None

Item 5: RESOLUTION: SURVEY FOR 99TH & PARALLEL (Discussion Begins 25:00)

Chris Finger, Public Works, presented ADA compliance and lane improvements triggered by development requirements. Troy Shaw, Public Works, noted developers contribute funds held in escrow (\$120,000-\$125,000 from recent gas station) to fund complete intersection reconstruction.

Key points:

- The project will add ADA-compliant features (like detectable warning panels) and lane improvements to the intersection.
- Improvements support accessibility and address issues identified in traffic/development studies for the area.
- The procedural resolution permits city staff to begin surveying and negotiating with property owners for any needed land or easements but does not obligate funding or acquisition yet.

The Chairman opened the public hearing. No comments were received. The Chairman closed the public hearing.

Commissioner Stites moved to adopt the resolution. The motion was seconded by Commissioner Burns.

Vote: Motion carries 6-0

- Ayes: Gonzalez, Lopez, Stites, Burns, Kane, Burroughs
- Nays: None
- Absent: None

Item 6: RESOLUTION: SURVEY FOR 10TH & GRANDVIEW (Discussion Begins 28:37)

Chris Finger, Public Works, presented safety improvements for the intersection. The project will eliminate the angled intersection approach and add parking for Northrop Park, funded by ARPA and 2023 debt funding.

Key points:

- The 10th and Grandview project targets safety improvements at an intersection with a history of frequent accidents (15–18 in recent years).
- The plan, still in design, may straighten or realign the intersection, eliminate hazardous angles, and add a new parking lot for Northrop Park.
- Safety enhancements include channelization (e.g., curb islands, bollards) to prevent dangerous turning maneuvers and reduce speeding.
- Public engagement, including input from district commissioners, is part of the ongoing design process.

The Chairman opened the public hearing. No comments were received. The Chairman closed the public hearing.

Commissioner Burns moved to adopt the resolution. The motion was seconded by Commissioner Lopez.

Vote: Motion carries 6-0

- Ayes: Gonzalez, Lopez, Stites, Burns, Kane, Burroughs
- Nays: None
- Absent: None

Item 7: RESOLUTION: GRAVITY INTERCEPTOR FROM PUMP STATION 45 TO PUMP STATION 7 (Discussion Begins 33:38)

Chris Finger, Public Works, presented consent decree mandated sewer capacity improvements to address Sanitary Sewer Overflows (SSO) during wet weather events, funded by sanitary sewer enterprise funds.

Key points:

- The upgrade increases capacity to prevent sewage discharge during wet weather events.
- The resolution is procedural—authorizing surveys and owner negotiations but not committing to acquisition or construction at this stage.

The Chairman opened the public hearing. No comments were received. The Chairman closed the public hearing.

Commissioner Kane moved to adopt the resolution. The motion was seconded by Commissioner Burns.

Vote: Motion carries 6-0

- Ayes: Gonzalez, Lopez, Stites, Burns, Kane, Burroughs
- Nays: None
- Absent: None

Item 8: RESOLUTION: APPROVING MEMORANDUM OF UNDERSTANDING WITH DEFFENBAUGH INDUSTRIES, INC., D/B/A WASTE MANAGEMENT⁷ (Discussion Begins 36:15)

Diana Miles, Solid Waste Manager, presented a comprehensive cart-based waste collection pilot program at no cost to residents or UG. The program includes 96-gallon trash and recycling containers, maintains current bulk item and yard waste allowances, and addresses service delays, blight, and low recycling rates (4% vs. 33% state average).

John Blessing from Waste Management explained two pilot areas: 6,500 homes north of State Avenue (83rd-86th Street area) and under 6,000 homes in the 18th Street to County Line area. The program includes new compressed natural gas trucks with camera systems for service verification.

Key points:

- The program retains allowances for 10 yard-waste bags and 3 bulky items per week, with advanced notice for bulky item pickup.
- New “smart” trucks with cameras and direct communication channels are part of the program, enhancing customer service and accountability.
- Public feedback included concerns about access for large trucks on narrow, on-street parked roads, future costs, and recycling contamination.
- The committee and public emphasized the importance of robust education and outreach, as well as ongoing monitoring of missed service, complaints, recycling participation/contamination rates, and neighborhood impacts.
- The initiative received strong support from the Solid Waste Management Committee and was unanimously endorsed at the committee level.

The Chairman opened the public hearing. The following comments were received:

- **Nancy Zielke, Chair of the Solid Waste Management Committee (Comment Begins: 1:07:51)**

The Chairman closed the public hearing.

Commissioner Kane moved to adopt the resolution. The motion was seconded by BPU Board Member Gonzalez.

Vote: Motion carries 5-1

- Ayes: Gonzalez, Lopez, Stites, Kane, Burroughs
- Nays: Burns
- Absent: None

Item 9: REPORT: EARLY LEARNING DRIVER TRAINING PROGRAM (Discussion Begins 1:14:20)

Jeff Miles, Director of Environmental Services, presented an informational report on the internal CDL training program implemented in 2022. The program reduced per-driver costs from \$6,000 (external truck driving school) to \$109 (internal program) with a 99.9% success rate, saving \$646,600 total. The multi-departmental team includes staff from Fleet, Parks, Transit, and Environmental Services.

The program serves all UG departments and is available to partner cities (Edwardsville and Bonner Springs).

The Chairman opened the public hearing. No comments were received. The Chairman closed the public hearing.

This item was for information only and no action was required.

Adjournment: (Discussion Begins 1:30:30)

Commissioner Kane moved to adjourn the meeting. The motion was seconded by Commissioner Burns.

Vote: Motion carries 6-0

- Ayes: Gonzalez, Lopez, Stites, Burns, Kane, Burroughs
- Nays: None
- Absent: None

The meeting was adjourned at 6:30 PM.

MLS

Unified Government of Wyandotte County and Kansas City, Kansas



Public Works and Safety Meeting

5th Floor Conference Room

701 N. 7th Street Trafficway, Kansas City, KS 66101

Commissioner Tom Burroughs, Chair

Commissioner Mike Kane – Commissioner Chuck Stites

Commissioner Bill Burns – Commissioner Phil Lopez

BPU Board Member Mary Gonzales

MINUTES

Monday, June 23, 2025

5:00 PM-5:45 PM

Attendance:

Committee Members Present:

- Commissioner Burroughs (Chair)
- Commissioner Lopez
- Commissioner Stites
- Commissioner Burns
- Ms. Gonzalez (BPU Board Member)

Committee Members Absent:

- Commissioner Kane

Staff Present:

- Brittne MacDonald (Unified Government Clerk's Office)
- Casey Meyer (Senior Counsel)
- Shanee Davis (Captain, Kansas City Kansas Police Department)
- Sarah Shafer (Public Works CMIP Program Manager)
- Alyssa Marcy (Long Range Planner)
- Rodney Lucas (Interim Assistant County Administrator)

Call to Order:

Commissioner Burroughs called the meeting to order at 5:00 PM.

Revisions to Agenda:

No revisions to the agenda were reported.

Approval of Previous Minutes:

Commissioner Burns moved to approve the minutes from the April 22 and May 20, 2024, meetings. The motion was seconded by Commissioner Lopez.

Vote: Motion carried 5-0

- Ayes: Gonzales, Lopez, Burns, Stites, Burroughs
- Nays: None
- Absent: Kane

Committee Agenda:**Item 1: ORDINANCE: REPEALING CERTAIN SUPERCEDED PROVISIONS OF THE CODE OF ORDINANCES (Discussion Begins: 2:19)**

Casey Meyer from the Legal Department presented a request for approval to repeal sections 22-187, 22-188, 22-189, and 22-190 of the Unified Government Code of Ordinances. These sections were originally adopted in 2006 and included various prohibitions on carrying concealed and unconcealed firearms.

The Chairman opened the public hearing. No comments were received. The Chairman closed the public hearing.

Commissioner Burns moved to approve the ordinance. The motion was seconded by Commissioner Lopez.

Vote: Motion carried 5-0

- Ayes: Gonzales, Lopez, Burns, Stites, Burroughs
- Nays: None
- Absent: Kane

Item 2: RESOLUTION: FISCAL YEAR 2025 COMMUNITY POLICING DEVELOPMENT MICRO GRANT PROGRAM (Discussion Begins: 7:04)

Captain Shanae Davis from the Kansas City Kansas Police Department presented a resolution for approval to apply for the Federal Fiscal Year 2025 Community Policing Development Micro Grant offered through the US Department of Justice under the Office of Community Oriented Police Services.

The anticipated award amount is \$175,000 with no required match from the UG. The project period spans from October 1, 2025, to September 30, 2027. If awarded, funds will be used to expand existing homeless outreach initiatives, support allocation of police resources to address issues arising from gatherings of homeless individuals, and host quarterly outreach fairs providing homeless individuals with basic necessities and various resources.

The Chairman opened the public hearing. No comments were received. The Chairman closed the public hearing.

Commissioner Stites moved to adopt the resolution. The motion was seconded by Commissioner Gonzales.

Vote: Motion carried 5-0

- Ayes: Gonzales, Lopez, Burns, Stites, Burroughs
- Nays: None
- Absent: Kane

Item 3: PRESENTATION: SAFE STREETS FOR ALL (SS4A) VISION ZERO ACTION PLAN (Discussion Begins: 10:16)

Sarah Shafer, Public Works, introduced the presentation, noting that Troy Shaw was unable to attend. Anthony Gallo from Kimley Horn, the consultant project manager for the Vision Zero plan, provided a comprehensive presentation on the Safe Streets for All program

Key points:

- \$960,000 federal grant plus \$240,000 from KDOT, totaling \$1.2 million with no UG match required
- Partnership between UG and cities of Bonner Springs, Edwardsville, and Lake Quivira
- Analysis of 28,000 crashes over 10 years (excluding interstates) with 150 fatalities and 537 disabling injuries
- 450 public comments received via project website
- High injury network analysis identifying top crash locations

- Top scoring dangerous locations were presented, including State Avenue between 29th and 38th Street and various high-traffic intersections.
- Major crash factors identified:
 - A. Roadway departure (42%)
 - B. Intersection crashes (58%)
 - C. Speeding (34%)
 - D. Pedestrian/bicyclist involvement (19%)
 - E. Unrestrained occupants (35%)

The Chairman opened the public hearing. No comments were received. The Chairman closed the public hearing.

This item was for information only, and no action was required.

Adjournment: (Discussion Begins: 43:12)

BPU Board Member Gonzales moved to adjourn the meeting. The motion was seconded by Commissioner Burns.

Vote: Motion carried 5-0

- Ayes: Gonzales, Lopez, Burns, Stites, Burroughs
- Nays: None
- Absent: Kane

The meeting was adjourned at 5:45 PM.

Unified Government of Wyandotte County and Kansas City, Kansas



Public Works and Safety Meeting

Commission Chambers

701 N. 7th Street Trafficway, Kansas City, KS 66101

Chair Andrew Kump

*Commissioner, District 2, Bill Burns - Commissioner, District 3, Christian Ramirez
Commissioner, District 4, Evelyn Hill - Commissioner, District 6, Phil Lopez*

MINUTES

Wednesday, January 28, 2026

5:05 PM – 5:26 PM

Attendance:

Committee Members Present:

- Commissioner Kump (Chair)
- Commissioner Lopez
- Commissioner Hill
- Commissioner Ramirez
- Commissioner Burns

Committee Members Absent:

- None

Staff Present:

- Monica L. Sparks (Unified Government Clerk)
- Troy Shaw (Director of Public Works)
- Casey Meyer (Deputy Chief Counsel)
- Delaney Lankachandra (Legal Department)
- John Droppelmann (Fire Marshal, Kansas City, Kansas Fire Department)
- Wendy Green (Deputy Chief Counsel)
- Luke Terrell (Electrical Distribution Engineering III, Board of Public Utilities)
- Brandon Sisk (Project Engineer, Board of Public Utilities)

Call to Order

Commissioner Kump called the meeting to order at 5:05 PM.

Revisions to Agenda:

No revisions to the agenda were announced.

Approval of Previous Minutes: (Discussion Begins 2:17)

Commissioner Ramirez moved to approve the minutes from the January 27, October 27 and November 27, 2025 meetings. The motion was seconded by Commissioner Burns.

Vote: Motion carried 5-0

- Ayes: Lopez, Hill, Ramirez, Burns, Kump
- Nays: None
- Absent: None

Committee Agenda:

Item 4.1: RESOLUTION: CENTRAL AVE BRIDGE REPLACEMENT GRANT APPLICATION (Discussion Begins: 02:54)

Troy Shaw, Public Works, presented a resolution to apply for a BUILD grant for the Central Avenue bridge replacement project. Shaw announced that the state had confirmed they would replace the bridge in conjunction with their I-70 Central Avenue Bridge Project. The grant application would fund additional pedestrian facilities and accommodation not typically included in state projects. The grant amount is up to \$25 million, with the intent to use state funding as the matching portion, potentially resulting in zero cost to the UG. Any required local match would require additional commission approval.

Key Details:

- (KDOT) has announced it will replace the Central Avenue bridge as part of the I-70 Central Avenue Bridge Project, aligning with public input and the desire to reopen the bridge.
- The BUILD grant (up to about \$25 million) would fund enhancements beyond the state's basic project, such as additional pedestrian facilities and other accommodations not typically covered by KDOT.

The Chairman opened the public hearing. No comments were received. The Chairman closed the public hearing.

Commissioner Burns moved to adopt the resolution. The motion was seconded by Commissioner Ramirez.

Vote: Motion carried 5-0

- Ayes: Lopez, Hill, Ramirez, Burns, Kump
- Nays: None
- Absent: None

Item 4.2: RESOLUTION: REQUEST FOR APPROVAL TO APPLY FOR THE FISCAL YEAR 2026 FEDERAL STOP VIOLENCE AGAINST WOMEN ACT GRANT (Discussion Begins: 5:27)

Casey Meyer, Legal Department, requested approval to apply for and accept the federal STOP Violence Against Women Act grant. This annual grant supports the victim services coordinator and domestic violence prosecutor in Municipal Court. The grant value is \$133,295.30 with a required match of \$45,814.48 to be funded from existing funds.

The Chairman opened the public hearing. No comments were received. The Chairman closed the public hearing.

Commissioner Burns moved to adopt the resolution. The motion was seconded by Commissioner Hill.

Vote: Motion carried 5-0

- Ayes: Lopez, Hill, Ramirez, Burns, Kump
- Nays: None
- Absent: None

Item 4.3: RESOLUTION: DECLARING THE NECESSITY AND AUTHORIZING A SURVEY OF LANDS TO BE ACQUIRED BY THE BOARD OF PUBLIC UTILITIES (Discussion Begins: 18:18)

Wendy Green, Deputy Chief Counsel; Luke Terrell, BPU Electrical Engineering; Brandon Sisk, BPU Water Department, presented the item. The resolution declares the necessity and authorizes a survey of lands to be acquired by the Board of Public Utilities. The project involves easements for installing a 12-inch water main line, an overhead pole line, and two 6-inch electric PVC conduits. The water main would tie into existing infrastructure off State Line Road, currently served by an interconnect with Kansas City, Missouri. The project involves easements only, not full property acquisition.

Key Details:

- The resolution authorizes BPU to survey land and obtain easements needed for utility infrastructure, and, if necessary, to use eminent domain following negotiation and court-based appraisal processes.
- BPU plans to use the easements to install a 12-inch water main, an overhead pole line, and two 6-inch underground electric PVC conduits, tying new water infrastructure into existing lines near State Line Road and avoiding the need to cross the Kansas River.

The Chairman opened the public hearing. No comments were received. The Chairman closed the public hearing.

Commissioner Ramirez moved to adopt the resolution. The motion was seconded by Commissioner Burns.

Vote: Motion carried 5-0

- Ayes: Lopez, Hill, Ramirez, Burns, Kump
- Nays: None
- Absent: None

Item 4.4: ORDINANCE: AMENDING CHAPTER 15, ARTICLE IV, FIREWORKS (Discussion Begins: 7:58)

Delaney Lankachandra, UG Legal Department, with Fire Marshal John Droppelmann appeared for questions. The ordinance discussed is extending fireworks sales dates from June 29-July 4 to June 27-July 4, with an option to extend sales past 10 PM. This item was returned from the Board of Commissioners on December 18, 2025, for further discussion. The ordinance offers two options: extending the start date two days early and softening the 10 PM sales end time to allow customers already inside tents to complete purchases.

Key Details:

- The committee considered an ordinance amending Chapter 15, Article 4 (fireworks) to:
 - Extend sales dates from June 29–July 4 to June 27–July 4, and
 - Adjust the 10:00 PM sales cutoff (original “soft close” concept for customers already in the tent).
- Fire Marshal Dropleman said the Fire Department can manage the extended dates, but there is a minor added cost and recommended a clear hard closing time instead of a vague soft closing, since staff cannot be at all stands at once.

The Chairman opened the public hearing. Comments were received.

- **Cory Hall (Comment Begins 15:25)**

The Chairman closed the public hearing.

Commissioner Burns moved to approve the ordinance for Option 1 (start June 27) with an 11:00 PM hard stop on sales. The motion was seconded by Commissioner Lopez.

Vote: Motion carried 4/1

- Ayes: Lopez, Burns, Ramirez, Kump
- Nays: Hill
- Absent: None

Adjournment: (Discussion Begins: 23:34)

Commissioner Burns moved to adjourn the meeting. The motion was seconded by Commissioner Ramirez.

Vote: Motion carried 5-0

- Ayes: Lopez, Hill, Ramirez, Burns, Kump
- Nays: None
- Absent: None

The meeting was adjourned at 5:26 PM

ML



Report to Public Works & Safety Standing Committee

MEETING DATE	PRESENTER	DEPARTMENT
	<div style="border: 1px solid black; padding: 5px; margin-bottom: 5px;">Troy Shaw, County Engineer/ Director of Public Works</div> tshaw@wycokck.org x5416	Public Works
AGENDA ITEM #4.1.		
PRESENTATION: SAFE STREETS FOR ALL (SS4A) VISION ZERO ACTION PLAN		
BACKGROUND		
<p>The Unified Government of Wyandotte County and Kansas City, Kansas (UG), in partnership with the Cities of Bonner Springs and Edwardsville, was awarded a Safe Streets and Roads for All (SS4A) grant to develop a Vision Zero Action Plan aimed at eliminating traffic fatalities and severe injuries, with a focus on equitable investment in underserved communities. Building on the adopted goDotte Countywide Strategic Mobility Plan, the Action Plan uses data-driven analysis—overlaying crash data with census information—to identify high-injury and high-risk roadway networks and prioritize intersections and roadway segments for future federal grant applications.</p> <p>The Board of County Commissioners has adopted the plan’s goals and vision to position the community for SS4A implementation grants. Approval of the prioritized locations enables staff to pursue competitive federal funding opportunities anticipated through the Federal Highway Administration without committing the UG or partner cities to additional financial obligations.</p>		
RECOMMENDATION		
<p>Approve</p> <p>Approval to adopt the plan and authorize staff to submit for grant applications.</p>		
BUDGET IMPACTS / FINANCIAL CONSIDERATIONS		
N/A		
LEGAL/ POLICY CONSIDERATIONS		
N/A		
ATTACHMENTS		
2026-MARCH Vision Zero_Public Works Standing Committee_Commission Action Report v0_20250224, 2026-MARCH WYCO VZAP_Public Works Standing Committee_v2, UGSS4A_Potential Catalyst Project List_20260213_Intersections Handout		

Approved by Mayor/Administrator to add to agenda.

Commission Agenda Item Report

Title: Safe Streets for All (SS4A) Vision Zero Action Plan

Proposed Agenda Date: Public Works and Safety Standing Committee

Presented by: Alyssa Marcy, Department of Planning and Urban Development
Sarah Shafer, Public Works

BACKGROUND:

- The Unified Government of Wyandotte County and Kansas City, Kansas (UG), in collaboration with the Cities of Bonner Springs and Edwardsville, applied for and received a SS4A grant to eliminate all traffic fatalities and severe injuries while ensuring equitable investment in our most underserved communities.
- Our community acknowledges that traffic deaths and severe injuries are preventable and unacceptable, and that protecting human lives takes priority over other objectives of the road system.
- Through creation of a Vision Zero Action Plan, which builds upon and addresses the first action item of the UG adopted goDotte Countywide Strategic Mobility Plan, our intent is to use innovative strategies, such as Collision and Equity Emphasis areas, to support larger Countywide goals such as equity, sustainability, and economic development.
- Our community has participated in the planning and data gathering process to ensure their voice is included in the creation of the goals and vision presented to the Board of Commissioners.
- The Vision Zero Action Plan overlays census data with crash points to understand the context and communities with high crash rates.
- The Unified Government Board of County Commission adopted goals and vision to meet the first steps of being eligible for SS4A implementation grants. The next step is to approve the high priority intersections and roadway segments for staff to be prepared for grant applications.
- The data gathered and methodology of analysis identifies the high injury and high-risk roadway network, the analysis prioritizes intersections and roadway segments for competitive grant opportunities.
- SS4A grant opportunities through Federal Highway Administration are anticipated to be advertised for applications in June and the SS4A team is preparing for competitive application.
- The approval of the priority intersections and the action plan do not bind the UG, City of Edwardsville, or City of Bonner Springs to any financial commitments.
- The approval of the plan with prioritized locations based upon data will allow staff to submit for application of an SS4A construction grant with no additional budget support.

BUDGET IMPACTS / FINANCIAL CONSIDERATIONS:

- None.

POLICY CONSIDERATIONS:

- Approve the prioritization list of projects to be included in the Vision Zero Action Plan and to be submitted for grants.

PROCUREMENT CONSIDERATIONS:

- None.

LEGAL CONSIDERATIONS:

- None.

RECOMMENDED ACTION:

- To adopt the Vision Zero Action Plan and authorize staff to submit for grant applications that do not require additional budget authorization to the UG.

COUNTY ADMINISTRATION COMMENTS:

-

MAYOR AGENDA DIRECTION:

-

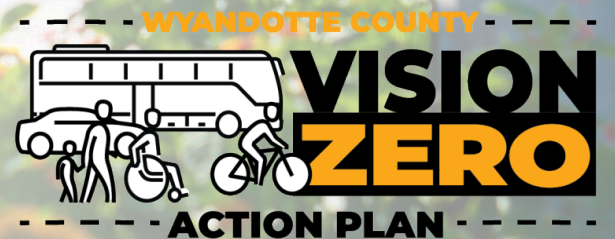
**Public Works & Safety
Standing Committee**

March 16, 2026

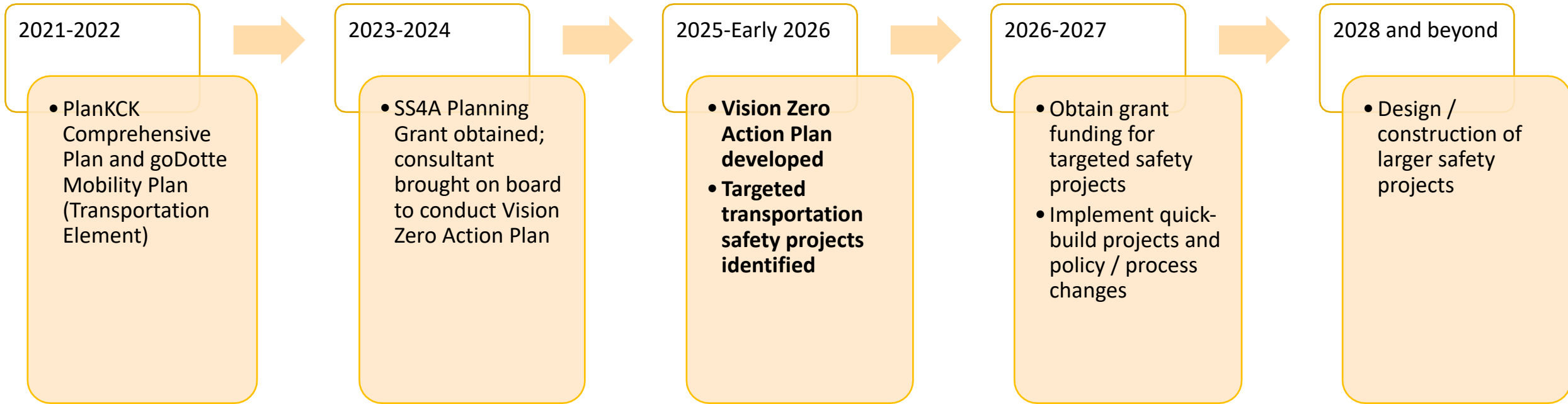


Agenda

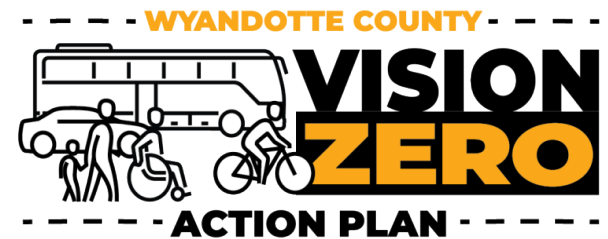
- 1 Vision Zero Plan Status
- 2 Grant Funding Opportunities
- 3 Priority Safety Projects Discussion
- 4 Next Steps



Vision Zero Action Plan Status



Vision Zero Action Plan draft in review by UG Planning / Public Works staff; intended for adoption before June 1st



Vision Zero Steering Committee

UG - KCK

- Transportation
- Health Department
- KCK Police
- KCK Fire
- County Sheriff
- Legal
- Human Resources
- Commissioner's Office

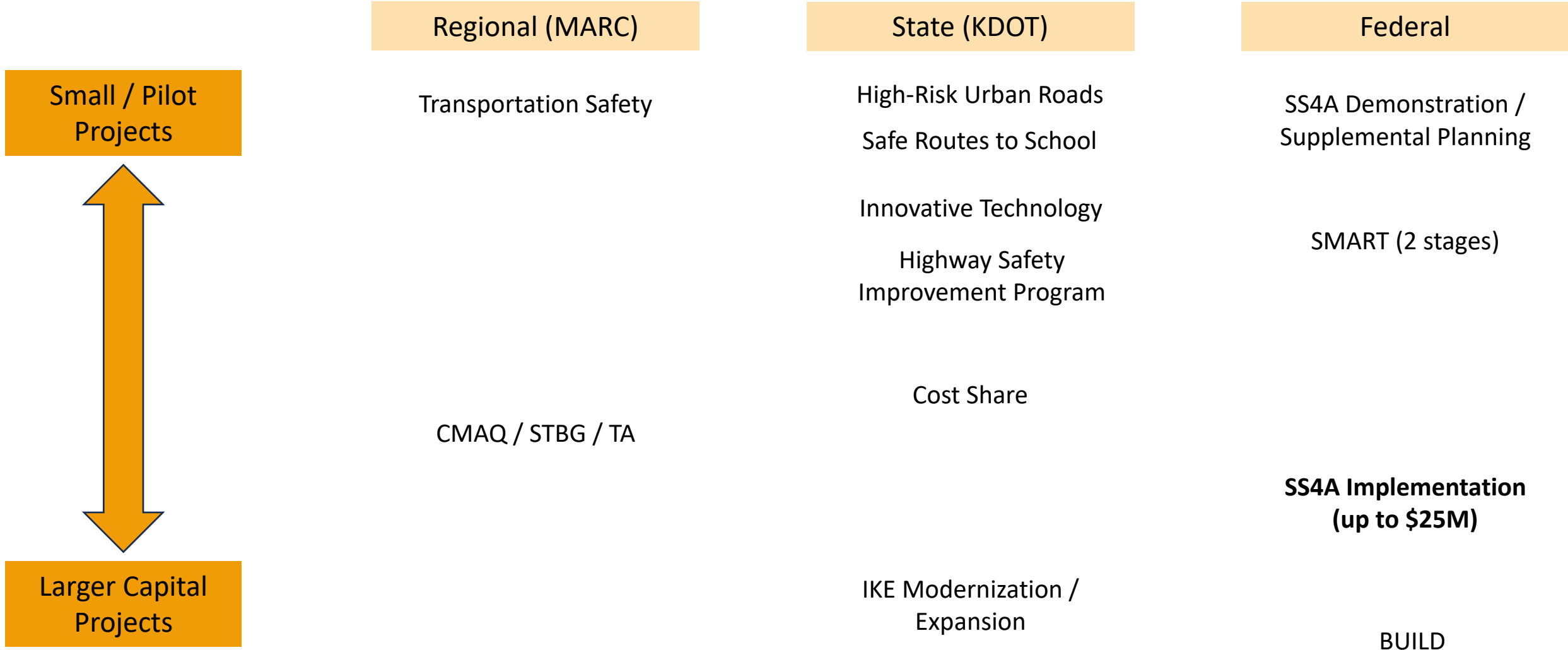
County Partners

- School Districts – KCK, Turner, Bonner Springs/Edwardsville, Piper
- MADD / SADD
- Safe Kids Greater Kansas City
- Livable Neighborhoods
- BikeWalkKC
- MOCSA
- The Whole Person

*Steering Committee has met four times thus far in the planning process and has developed our **Vision, Mission, and Goals** and recommendations for **Priority Safety Projects**.*



Example Grant Opportunities



SS4A Implementation Grant

- Funds design and construction of transportation safety projects
 - Examples: intersection improvements, pedestrian and cyclist facilities, traffic calming/speed management
- 2025 round awards:
 - \$687M total across 67 grantees (\$10.2M average award)
 - In Kansas: 2 awards (Leavenworth County and City of Wichita) for \$37M total
 - Max award amount: \$25M
- 20% local match requirement
 - **Build Kansas Fund can cover most/all**

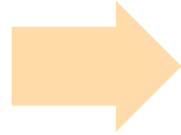


*FY 2026 applications
likely due in June 2026.*

Priority Safety Project Locations

Quantitative Scoring

- Crash History – number of crashes, severity, cost
- Crash Risk – traffic volume, road context
- Public / stakeholder comments



Steering Committee Review

- Review of each Commissioner District
- “Shortlist” of approximately 20 locations



UG / Partner City Staff Review

- Other planned projects in area?
- Coordination with KDOT (where applicable)

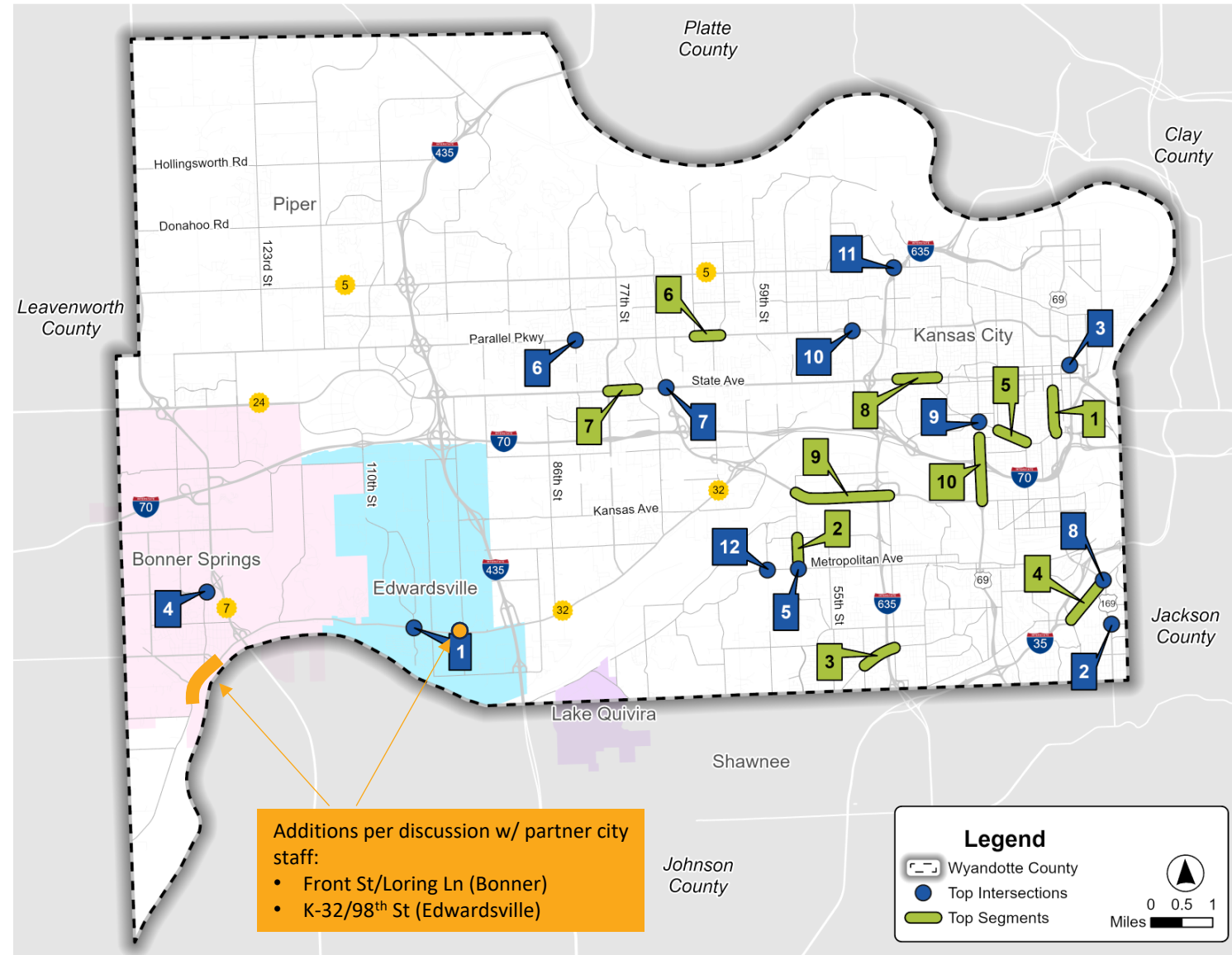
Example Scoring

Intersection Information				Scoring				Crash History				Traffic Information		Additional Considerations					
Intersection Name	District	Jurisdiction	Land Use	Total Location Score	HIN Score	HRN Score	Public Comment?	Total Crash Cost (2025 \$)	Fatal / Serious Injury Crashes	Total Crashes	VRU Crashes	Intersection Control	Daily Traffic Volume	In CIP?	Previously Planned Project?	On State System?	Sewer/Water Project Location?	Adjacent Brownfield?	Adjacent Vacant Site?
Kaw Dr & 4th St	7	Edwardsville	Industrial	9	4	4	1	\$ 45,900,000	5	42	3	Signalized	5,700	Yes	Yes	Yes			
Rainbow Blvd & 39th Ave	3	Kansas City	Urban Core	9	4	4	1	\$ 105,000,000	9	92	7	Signalized	24,700		Yes	Yes			
Rainbow Blvd/7th St & Southwest Blvd	3	Kansas City	Urban Core	9	4	4	1	\$ 97,200,000	7	189	6	Signalized	54,900	Yes	Yes	Yes			
5th St & Washington Blvd	4	Kansas City	Urban Core	8.36	4	3	1	\$ 46,200,000	4	39	3	Signalized	8,500	Yes					
18th St & Central Ave	2	Kansas City	Urban Core	8.36	4	3	1	\$ 34,100,000	2	130	2	Signalized	14,200	Yes	Yes		Yes		
7th St Trfy & State Ave	2	Kansas City	Urban Core	8	4	4		\$ 45,000,000	3	38	3	Signalized	8,300	Yes	Yes	Yes	Yes		
7th St Trfy & Kansas Ave	2	Kansas City	Industrial	8	4	4		\$ 35,800,000	5	90	2	Signalized	27,400	Yes	Yes	Yes			
K-7 Hwy & Parallel Pkwy	5	Kansas City	Rural Edge	8	4	4		\$ 23,200,000	4	129	1	Signalized	39,100		Yes	Yes			
18th St & State Ave	2	Kansas City	Urban Core	8	4	4		\$ 48,600,000	5	79	3	Signalized	16,900	Yes	Yes				
38th St & State Ave	4	Kansas City	Mixed Use/Commercial	8	4	4		\$ 34,700,000	2	120	2	Signalized	14,800	Yes	Yes				
42nd St & Kansas Ave	6	Kansas City	Industrial	8	4	4		\$ 32,900,000	2	87	2	Signalized	12,100			Yes			
College Pkwy & State Ave	8	Kansas City	Mixed Use/Commercial	8	4	4		\$ 11,300,000	3	137	0	Signalized	21,500		Yes	Yes			
47th St & Parallel Pkwy	1	Kansas City	Suburban Realm	8	4	4		\$ 23,600,000	4	99	1	Signalized	14,900						
State Ave & 78th St	8	Kansas City	Mixed Use/Commercial	8	4	4		\$ 19,900,000	2	97	1	Signalized	18,100		Yes				
72nd St & College Pkwy	8	Kansas City	Suburban Realm	8	4	4		\$ 19,600,000	2	97	1	Signalized	21,100	Yes					
57th St & Meadowlark Ln	8	Kansas City	Mixed Use/Commercial	8	4	4		\$ 20,400,000	2	93	1	Signalized	17,400		Yes				
Meadowlark Ln & 59th St	8	Kansas City	Suburban Realm	8	4	4		\$ 25,100,000	5	113	1	Signalized	15,600						
18th St & Parallel Pkwy	4	Kansas City	Urban Core	7.72	4	2	1	\$ 33,900,000	4	62	2	Signalized	10,000	Yes	Yes		Yes		
K-7 Hwy & Kansas Ave	7	Bonner Springs	Suburban Realm	7.72	3	4	1	\$ 8,400,000	1	142	0	Signalized	30,100		Yes	Yes	Yes		
82nd St & Parallel Pkwy	5	Kansas City	Suburban Realm	7.72	3	4	1	\$ 17,200,000	1	51	1	Signalized	14,600						
7th St Trfy & Central Ave	2	Kansas City	Urban Core	7.36	4	3		\$ 45,400,000	3	69	3	Signalized	15,700	Yes	Yes	Yes			
29th St & State Ave	4	Kansas City	Mixed Use/Commercial	7.36	4	3		\$ 20,300,000	3	65	1	Signalized	10,900	Yes	Yes				
Village West Pkwy & Parallel Pkwy	7	Kansas City	Mixed Use/Commercial	7.36	4	3		\$ 33,200,000	2	111	2	Signalized	15,400						
63rd St & Leavenworth Rd	8	Kansas City	Suburban Realm	7.28	4	3		\$ 4,300,000	1	51	0	Signalized	6,000			Yes			
Sortor Dr & 38th St	1	Kansas City	Suburban Realm	7.28	4	3		\$ 33,700,000	4	67	2	Signalized	13,100			Yes			
Kaw Dr & 98th St	7	Edwardsville	Industrial	7.08	4	1	1	\$ 33,900,000	7	27	2	TWSC	400	Yes	Yes	Yes			
18th St & Grandview Blvd	2	Kansas City	Urban Core	7.08	4	1	1	\$ 17,800,000	1	74	1	Signalized	15,100	Yes					
10th St & Grandview Blvd	4	Kansas City	Urban Core	7.08	4	1	1	\$ 44,100,000	3	28	3	Signalized	8,000	Yes					
55th St & Metropolitan Ave	6	Kansas City	Rural Edge	7.04	4	3		\$ 19,500,000	4	58	1	Signalized	10,400	Yes					
K-7 Hwy & Leavenworth Rd	5	Kansas City	Rural Edge	6.96	3	4		\$ 6,000,000	3	66	0	Signalized	24,000		Yes	Yes			
10th St & State Ave	4	Kansas City	Urban Core	6.72	4	2		\$ 47,000,000	3	51	3	Signalized	5,700	Yes	Yes				
Praun Ln & 38th St	1	Kansas City	Urban Core	6.72	4	2		\$ 7,800,000	2	83	0	Signalized	15,300	Yes					

Targeted Safety Project Locations

Targeted Safety Project Intersections	
1	K-32/Kaw Drive & 4 th Street
2	Rainbow Boulevard & 39 th Avenue
3	5 th Street & Washington Boulevard
4	Metropolitan Avenue & Nettleton Avenue
5	55 th Street & Metropolitan Avenue
6	82 nd Street & Parallel Parkway
7	College Parkway & State Avenue
8	Rainbow Boulevard/7 th Street & Southwest Boulevard
9	18 th Street & Central Avenue
10	47 th Street & Parallel Parkway
11	Leavenworth Road & 38 th Street
12	Holiday Drive & 59 th Street

Targeted Safety Project Segments		
1	7 th Street Trafficway/US-69	Barnett Avenue to Central Avenue
2	55 th Street	Swartz Road to Metropolitan Avenue
3	Shawnee Drive	42 nd Street to 47 th Street
4	Southwest Boulevard	Rainbow Boulevard to Mission Road
5	Central Avenue	10 th Street to 13 th Street
6	Parallel Parkway	64 th Terrace to 67 th Street
7	State Avenue	75 th Drive to 78 th Street
8	State Avenue	29 th Street to 38 th Street
9	Kansas Avenue	42 nd Street to Turner Diagonal Freeway
10	18 th Street	Ridge Avenue to Kansas Avenue



Additions per discussion w/ partner city staff:

- Front St/Loring Ln (Bonner)
- K-32/98th St (Edwardsville)

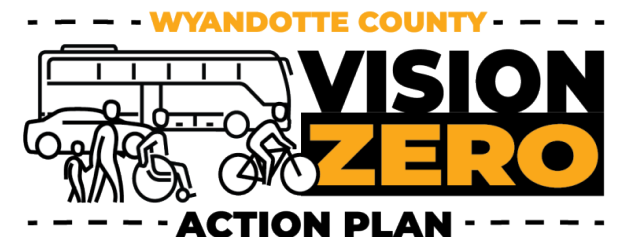
Legend

- Wyandotte County
- Top Intersections
- Top Segments

0 0.5 1 Miles

Recommended “Catalyst Projects” for SS4A Implementation Grant

- KCK (3 projects)
 1. Parallel Pkwy from 64th Ter to 67th St
 2. Rainbow Blvd/7th St & Southwest Blvd
 3. 18th St from Ridge Ave to I-70 **OR** 55th St from Metropolitan Ave to Swartz Rd
- Bonner Springs (1 project)
 4. Front St / Loring Ln from Kaw Dr to Stillwell Rd
- Edwardsville (1 project)
 5. K-32 (Kaw Dr) & 98th St



Recommended “Catalyst Projects” for SS4A Implementation Grant

Jurisdiction	Location	Fatal / Serious Injury Crashes	Total 10-Year Crash Costs	Suggested Improvements
KCK	Parallel Pkwy from 64 th Ter to 67 th St	3	\$6.7M	Close slip lane; consolidate driveways; improve street lighting; speed feedback sign
KCK	Rainbow Blvd/7 th St & Southwest Blvd Intersection	7	\$97.2M	Street lighting; signal backplates; high-vis crosswalks; ped signal upgrades; possible driveway closures / lane reconfiguration
KCK (Choose 1)	18 th St from Ridge Ave to I-70	5	\$35.3M	Improve pavement markings / centerline; intersection signage; street lighting
	55 th St from Metropolitan Ave to Swartz Rd	1	\$14.6M	Improve pavement markings; high-vis crosswalks; ped signal improvements; bike/ped separated facility (shared use path)
Bonner Springs	Front St / Loring Ln from Kaw Dr to Stillwell Rd	3	\$28.8M	Lane reconfiguration / reallocation
Edwardsville	K-32 (Kaw Dr) & 98 th St Intersection	7	\$33.9M	Access control / possible signal; bike/ped accommodations for crossing

Next Steps

- Finalize Vision Zero Plan – April 1st
- Adopt Vision Plan – by June 1st
 - Vision Zero Plan must be adopted to be eligible to apply for SS4A
- Apply for SS4A Implementation funding for up to five (5) priority safety project locations
 - Grant application window will be ~Apr 1st - June 30th
 - Need projects finalized by June 1st for inclusion in application
- Apply for additional funding sources for other targeted “short list” infrastructure projects
- Implement other policy / process recommendations from Vision Zero Plan

Questions?

Sarah Shafer, Public Works

Sshafer@wycokck.org

Alyssa Marcy, Planning + Urban Design

Amarcy@wycokck.org

**Check out the website:
www.wycokck.org/visionzero**



Wyandotte County Vision Zero Action Plan

INTERSECTION Scores

Intersection Information				Scoring				Crash History				Traffic Information		Additional Considerations					
Intersection Name	District	Jurisdiction	Land Use	Total Location Score	HIN Score	HRN Score	Public Comment?	Total Crash Cost (2025 \$)	Fatal / Serious Injury Crashes	Total Crashes	VRU Crashes	Intersection Control	Daily Traffic Volume	In CIP?	Previously Planned Project?	On State System?	Sewer/Water Project Location?	Adjacent Brownfield?	Adjacent Vacant Site?
Kaw Dr & 4th St	7	Edwardsville	Industrial	9	4	4	1	\$ 45,900,000	5	42	3	Signalized	5,700	Yes	Yes	Yes			
Rainbow Blvd & 39th Ave	3	Kansas City	Urban Core	9	4	4	1	\$ 105,000,000	9	92	7	Signalized	24,700		Yes	Yes			
Rainbow Blvd/7th St & Southwest Blvd	3	Kansas City	Urban Core	9	4	4	1	\$ 97,200,000	7	189	6	Signalized	54,900	Yes	Yes	Yes			
5th St & Washington Blvd	4	Kansas City	Urban Core	8.36	4	3	1	\$ 46,200,000	4	39	3	Signalized	8,500	Yes					
18th St & Central Ave	2	Kansas City	Urban Core	8.36	4	3	1	\$ 34,100,000	2	130	2	Signalized	14,200	Yes	Yes		Yes		
7th St Trfy & State Ave	2	Kansas City	Urban Core	8	4	4		\$ 45,000,000	3	38	3	Signalized	8,300	Yes	Yes	Yes	Yes		
7th St Trfy & Kansas Ave	2	Kansas City	Industrial	8	4	4		\$ 35,800,000	5	90	2	Signalized	27,400	Yes	Yes	Yes			
K-7 Hwy & Parallel Pkwy	5	Kansas City	Rural Edge	8	4	4		\$ 23,200,000	4	129	1	Signalized	39,100		Yes	Yes	Yes		
18th St & State Ave	2	Kansas City	Urban Core	8	4	4		\$ 48,600,000	5	79	3	Signalized	16,900	Yes	Yes				
38th St & State Ave	4	Kansas City	Mixed Use/Commercial	8	4	4		\$ 34,700,000	2	120	2	Signalized	14,800	Yes	Yes				
42nd St & Kansas Ave	6	Kansas City	Industrial	8	4	4		\$ 32,900,000	2	87	2	Signalized	12,100		Yes	Yes			
College Pkwy & State Ave	8	Kansas City	Mixed Use/Commercial	8	4	4		\$ 11,300,000	3	137	0	Signalized	21,500		Yes	Yes			
47th St & Parallel Pkwy	1	Kansas City	Suburban Realm	8	4	4		\$ 23,600,000	4	99	1	Signalized	14,900						
State Ave & 78th St	8	Kansas City	Mixed Use/Commercial	8	4	4		\$ 19,900,000	2	97	1	Signalized	18,100		Yes				
72nd St & College Pkwy	8	Kansas City	Suburban Realm	8	4	4		\$ 19,600,000	2	97	1	Signalized	21,100	Yes					
57th St & Meadowlark Ln	8	Kansas City	Mixed Use/Commercial	8	4	4		\$ 20,400,000	2	93	1	Signalized	17,400		Yes				
Meadowlark Ln & 59th St	8	Kansas City	Suburban Realm	8	4	4		\$ 25,100,000	5	113	1	Signalized	15,600						
18th St & Parallel Pkwy	4	Kansas City	Urban Core	7.72	4	2	1	\$ 33,900,000	4	62	2	Signalized	10,000	Yes	Yes		Yes		
K-7 Hwy & Kansas Ave	7	Bonner Springs	Suburban Realm	7.72	3	4	1	\$ 8,400,000	1	142	0	Signalized	30,100		Yes	Yes			
82nd St & Parallel Pkwy	5	Kansas City	Suburban Realm	7.72	3	4	1	\$ 17,200,000	1	51	1	Signalized	14,600						
7th St Trfy & Central Ave	2	Kansas City	Urban Core	7.36	4	3		\$ 45,400,000	3	69	3	Signalized	15,700	Yes	Yes	Yes			
29th St & State Ave	4	Kansas City	Mixed Use/Commercial	7.36	4	3		\$ 20,300,000	3	65	1	Signalized	10,900	Yes	Yes				
Village West Pkwy & Parallel Pkwy	7	Kansas City	Mixed Use/Commercial	7.36	4	3		\$ 33,200,000	2	111	2	Signalized	15,400						
63rd St & Leavenworth Rd	8	Kansas City	Suburban Realm	7.28	4	3		\$ 4,300,000	1	51	0	Signalized	6,000			Yes			
Sortor Dr & 38th St	1	Kansas City	Suburban Realm	7.28	4	3		\$ 33,700,000	4	67	2	Signalized	13,100			Yes			
Kaw Dr & 98th St	7	Edwardsville	Industrial	7.08	4	1	1	\$ 33,900,000	7	27	2	TWSC	400	Yes	Yes	Yes			
18th St & Grandview Blvd	2	Kansas City	Urban Core	7.08	4	1	1	\$ 17,800,000	1	74	1	Signalized	15,100	Yes					
10th St & Grandview Blvd	4	Kansas City	Urban Core	7.08	4	1	1	\$ 44,100,000	3	28	3	Signalized	8,000	Yes					
55th St & Metropolitan Ave	6	Kansas City	Rural Edge	7.04	4	3		\$ 19,500,000	4	58	1	Signalized	10,400	Yes					
K-7 Hwy & Leavenworth Rd	5	Kansas City	Rural Edge	6.96	3	4		\$ 6,000,000	3	66	0	Signalized	24,000		Yes	Yes			
10th St & State Ave	4	Kansas City	Urban Core	6.72	4	2		\$ 47,000,000	3	51	3	Signalized	5,700	Yes	Yes				
Praun Ln & 38th St	1	Kansas City	Urban Core	6.72	4	2		\$ 7,800,000	2	83	0	Signalized	15,300	Yes					
64th Ter & 63rd St	8	Kansas City	Suburban Realm	6.72	3	4		\$ 4,100,000	0	49	0	Signalized	11,500						
90th St & 91st St	5	Kansas City	Suburban Realm	6.72	3	4		\$ 4,400,000	1	54	0	Signalized	18,500		Yes				
Kaw Dr & 65th St	6	Kansas City	Industrial	6.64	3	4		\$ 5,600,000	3	51	0	Signalized	5,100	Yes	Yes	Yes			
Rainbow Blvd & 36th Ave	3	Kansas City	Urban Core	6.64	3	4		\$ 31,200,000	3	49	2	Signalized	22,200	Yes	Yes	Yes			
Turner Diagonal Fwy & 59th Ln	6	Kansas City	Industrial	6.64	3	4		\$ 4,200,000	0	57	0	Signalized	4,900		Yes				
Sunshine Rd & Fairfax Trfy	1	Kansas City	Industrial	6.64	3	4		\$ 17,000,000	3	25	1	Signalized	12,200	Yes					
Turner Diagonal Fwy & 55th St	6	Kansas City	Industrial	6.64	3	4		\$ 30,400,000	3	36	2	Signalized	10,800		Yes	Yes			
Rainbow Blvd & 43rd Ave	3	Kansas City	Urban Core	6.64	3	4		\$ 7,000,000	1	152	0	Signalized	43,900		Yes	Yes			
42nd St & Metropolitan Ave	6	Kansas City	Suburban Realm	6.56	4	2		\$ 29,700,000	2	39	2	AWSC	11,500						
18th St & Quindaro Blvd	1	Kansas City	Urban Core	6.08	4	1		\$ 17,900,000	1	50	1	Signalized	6,700	Yes	Yes		Yes	Yes	
Mill St & Central Ave	2	Kansas City	Urban Core	6.08	4	1		\$ 30,500,000	3	36	2	Signalized	10,000	Yes	Yes				
Pacific Ave & 10th St	2	Kansas City	Urban Core	6.08	4	1		\$ 30,200,000	2	39	2	Signalized	7,800	Yes					
65th St & 64th Ter	8	Kansas City	Mixed Use/Commercial	6.08	4	1		\$ 35,800,000	8	52	2	Signalized	10,600		Yes				
Prairie Crossing & Parallel Pkwy	5	Kansas City	Mixed Use/Commercial	6.08	4	1		\$ 17,800,000	1	64	1	Signalized	16,200						
10th St & Minnesota Ave	4	Kansas City	Urban Core	6.08	4	1		\$ 31,700,000	2	46	2	Signalized	11,100	Yes	Yes				
10th St & Central Ave	2	Kansas City	Urban Core	6.08	4	1		\$ 62,600,000	6	95	4	Signalized	17,500	Yes	Yes				
10th St & Parallel Pkwy	4	Kansas City	Urban Core	6.08	4	1		\$ 31,100,000	4	25	2	Signalized	9,000	Yes	Yes		Yes		
10th St & Kansas Ave	2	Kansas City	Urban Core	6.08	4	1		\$ 48,000,000	5	73	3	Signalized	13,900	Yes	Yes				
8th St & Minnesota Ave	2	Kansas City	Urban Core	6.08	4	1		\$ 43,200,000	3	21	3	Signalized	7,000	Yes	Yes		Yes		
9th St & Barnett Ave	4	Kansas City	Urban Core	6.08	4	1		\$ 14,300,000	1	8	1	AWSC	1,000						
29th St & Minnesota Ave	4	Kansas City	Mixed Use/Commercial	6.08	4	1		\$ 18,800,000	2	55	1	Signalized	9,900	Yes					
Kaw Dr & Kansas Ave	6	Kansas City	Industrial	6.08	4	1		\$ 4,800,000	1	80	0	Signalized	1,200	Yes	Yes	Yes			
18th St & Ridge Ave	2	Kansas City	Urban Core	6	3	3		\$ 19,200,000	4	68	1	Signalized	12,300	Yes					
55th St & Leavenworth Rd	1	Kansas City	Suburban Realm	6	3	3		\$ 5,900,000	2	59	0	Signalized	5,100			Yes			
55th St & Parallel Pkwy	8	Kansas City	Suburban Realm	6	3	3		\$ 6,500,000	2	71	0	Signalized	9,700	Yes					
78th St & Riverview Ave	7	Kansas City	Suburban Realm	6	3	3		\$ 2,000,000	0	24	0	Signalized	9,400		Yes				
Woodland Blvd & Metropolitan Ave	3	Kansas City	Suburban Realm	6	3	3		\$ 3,500,000	1	46	0	Signalized	10,100	Yes					
K-7 Hwy & Donahoo Rd	5	Kansas City	Rural Edge	5.92	2	4		\$ 5,200,000	3	30	0	TWSC	25,200		Yes	Yes			
Rosedale Park Rd & Puckett Rd	3	Kansas City	Urban Core	5.72	3	1	1	\$ 400,000	0	4	0	TWSC	1,600						
13th St & Parallel Pkwy	4	Kansas City	Urban Core	5.72	3	1	1	\$ 5,300,000	3	45	0	Signalized	8,100	Yes	Yes		Yes	Yes	
Westview Dr & Central Ave	2	Kansas City	Urban Core	5.72	3	1	1	\$ 2,000,000	0	46	0	TWSC	6,700	Yes	Yes				
Parallel Pkwy & 27th St	4	Kansas City	Urban Core	5.72	3	1	1	\$ 3,900,000	2	29	0	Signalized	900	Yes					
34th St & Shawnee Dr	3	Kansas City	Suburban Realm	5.56	3	1	1	\$ 600,000	0	12	0	AWSC	4,800	Yes					
67th St & Parallel Pkwy	8	Kansas City	Suburban Realm	5.56	3	1	1	\$ 3,600,000	1	30	0	TWSC	9,400	Yes					
K-7 Hwy & 130th St	7	Bonner Springs	Suburban Realm	5.44	2	4		\$ 9,300,000	6	109	0	Signalized	26,000			Yes			
75th Dr & Parallel Pkwy	8	Kansas City	Suburban Realm	5.44	2	4		\$ 5,000,000	1	44	0	Signalized	11,400						
77th St & 78th St Sb	8	Kansas City	Suburban Realm	5.44	2	4		\$ 5,600,000	2	73	0	Signalized	15,800		Yes				
47th St & State Ave	1	Kansas City	Mixed Use/Commercial	5.36	3	2		\$ 18,800,000	2	49	1	Signalized	12,500		Yes				Yes
Washington Blvd & State Ave	4	Kansas City	Mixed Use/Commercial	5.36	3	2		\$ 18,000,000	1	54	1	Signalized	11,100	Yes	Yes				
7th St Trfy & Minnesota Ave	2	Kansas City	Urban Core	5.28	2	4		\$ 30,200,000	2	34	2	Signalized	16,200	Yes	Yes	Yes	Yes		
7th St Trfy & Osage Ave	2	Kansas City	Industrial	5.28	2	4		\$ 3,300,000	1	46	0	Signalized	29,100	Yes		Yes			
5th St & Minnesota Ave	2	Kansas City	Urban Core	5.28	2	4		\$ 29,900,000	2	34	2	Signalized	4,600	Yes			Yes		
Stanley Rd & Fairfax Trfy	1	Kansas City	Industrial	5.28	2	4		\$ 15,100,000	1	27	1	Signalized	23,900						
Mill St & Southwest Blvd	3	Kansas City	Suburban Realm	5	2	2	1	\$ 15,600,000	1	19	1	Signalized	8,600						
K-7 Hwy & Hollingsworth Rd	5	Kansas City	Rural Edge	4.96	2	3		\$ 5,800,000	4	44	0	TWSC	25,000	Yes	Yes	Yes			
47th St & Shawnee Dr	6	Kansas City	Suburban Realm	4.72	2	3		\$ 3,200,000	1	56	0	Signalized	17,500						

Wyandotte County Vision Zero Action Plan

INTERSECTION Scores

Intersection Information				Scoring				Crash History				Traffic Information		Additional Considerations					
Intersection Name	District	Jurisdiction	Land Use	Total Location Score	HIN Score	HRN Score	Public Comment?	Total Crash Cost (2025 \$)	Fatal / Serious Injury Crashes	Total Crashes	VRU Crashes	Intersection Control	Daily Traffic Volume	In CIP?	Previously Planned Project?	On State System?	Sewer/Water Project Location?	Adjacent Brownfield?	Adjacent Vacant Site?
51st St & Parallel Pkwy	8	Kansas City	Suburban Realm	4.72	2	3		\$ 3,500,000	1	51	0	Signalized	9,400						
94th St & Parallel Pkwy	7	Kansas City	Suburban Realm	4.72	2	3		\$ 1,900,000	0	26	0	Signalized	16,400						
59th St & Leavenworth Rd	1	Kansas City	Suburban Realm	4.72	2	3		\$ 3,900,000	2	40	0	Signalized	8,600			Yes			
Kaw Dr & 78th St	6	Kansas City	Industrial	4.72	3	1		\$ 1,500,000	0	18	0	AWSC	1,700	Yes	Yes	Yes			
6th St & Barnett Ave	2	Kansas City	Urban Core	4.72	3	1		\$ 28,900,000	2	21	2	TWSC	1,900	Yes			Yes		
13th St & Central Ave	2	Kansas City	Urban Core	4.72	3	1		\$ 29,600,000	2	26	2	Signalized	12,300	Yes	Yes				
39th Ave & State Line Rd	3	Kansas City	Urban Core	4.72	3	1		\$ 16,400,000	1	35	1	Signalized	10,500						
55th St & State Ave	1	Kansas City	Mixed Use/Commercial	4.72	3	1		\$ 18,100,000	2	36	1	Signalized	7,200		Yes				
59th St & Inland Dr	6	Kansas City	Industrial	4.72	3	1		\$ 900,000	0	13	0	TWSC	3,900						
Washington Blvd & 8th St	4	Kansas City	Urban Core	4.72	3	1		\$ 16,300,000	1	21	1	Signalized	4,200	Yes			Yes	Yes	
38th St & Victory Dr	1	Kansas City	Urban Core	4.72	3	1		\$ 16,700,000	2	28	1	Signalized	10,400						
38th St & Orville Ave	8	Kansas City	Urban Core	4.72	3	1		\$ 300,000	0	7	0	TWSC	4,400						
61st St & 59th Ln	8	Kansas City	Industrial	4.72	3	1		\$ 17,400,000	2	38	1	Yield	4,500	Yes	Yes				
9th St & Minnesota Ave	4	Kansas City	Urban Core	4.72	3	1		\$ 29,500,000	2	28	2	Signalized	7,000	Yes	Yes				
9th St & State Ave	4	Kansas City	Urban Core	4.72	3	1		\$ 31,600,000	5	24	2	Signalized	4,800	Yes	Yes		Yes		
Central Ave & N 14th St	2	Kansas City	Urban Core	4.72	3	1		\$ 3,500,000	1	62	0	Signalized	5,800	Yes	Yes				
38th St & Park Dr	2	Kansas City	Urban Core	4.72	3	1		\$ 2,000,000	0	25	0	Signalized	7,100						
Eaton St & Southwest Blvd	3	Kansas City	Urban Core	4.64	2	3		\$ 16,400,000	1	37	1	Signalized	37,900	Yes					
110th St & Parallel Pkwy	7	Kansas City	Mixed Use/Commercial	4.64	2	3		\$ 4,800,000	1	80	0	Signalized	25,200	Yes					
82nd St & State Ave	8	Kansas City	Mixed Use/Commercial	4.64	2	3		\$ 16,500,000	1	42	1	Signalized	12,900		Yes				
69th St & Parallel Pkwy	8	Kansas City	Suburban Realm	4.56	3	1		\$ 3,400,000	3	20	0	TWSC	9,200						
Riverview Ave & 86th St	7	Kansas City	Suburban Realm	4.56	3	1		\$ -	0	5	0	AWSC	2,000		Yes				
Riverview Ave & 72nd St	7	Kansas City	Suburban Realm	4.56	3	1		\$ 4,100,000	0	31	0	AWSC	4,600	Yes	Yes				
Rosedale Dr & 10th St	3	Kansas City	Suburban Realm	4.56	3	1		\$ 100,000	0	6	0	TWSC	100						
130th St & Delaware Pkwy	7	Kansas City	Suburban Realm	4.56	3	1		\$ 6,400,000	2	61	0	AWSC	1,700						
State Ave & 126th St	7	Kansas City	Suburban Realm	4.44	1	3	1	\$ 3,000,000	0	37	0	Signalized	20,800		Yes				
Kaw Dr & 102ndSt/9th St	7	Edwardsville	Industrial	4.36	2	1	1	\$ 1,900,000	1	23	0	TWSC	3,100	Yes	Yes	Yes			
7th St Trfy & Cheyenne Ave	2	Kansas City	Industrial	4.36	2	1	1	\$ 3,500,000	0	63	0	TWSC	26,400			Yes	Yes		
6th St & Central Ave	2	Kansas City	Urban Core	4.36	2	1	1	\$ 3,200,000	1	50	0	TWSC	2,700	Yes	Yes		Yes		
Rainbow Blvd & 47th St	3	Kansas City	Urban Core	4.28	1	3	1	\$ 1,600,000	1	25	0	Signalized	11,300		Yes	Yes			
Mission Rd & Southwest Blvd	3	Kansas City	Urban Core	4.28	1	3	1	\$ 2,800,000	1	66	0	Signalized	37,100						
K-7 Hwy & State Ave	7	Kansas City	Suburban Realm	4.16	1	4		\$ 4,100,000	0	60	0	Signalized	30,500		Yes	Yes			
Muncie Dr & 57th St	8	Kansas City	Suburban Realm	4.16	1	4		\$ 1,400,000	1	13	0	Signalized	44,200				Yes		
Tauromee Ave & 78th St	7	Kansas City	Suburban Realm	4.16	1	4		\$ 1,700,000	0	32	0	Signalized	12,700		Yes				
College Pkwy & Turner Diagonal Fwy	6	Kansas City	Suburban Realm	4.16	1	4		\$ 400,000	0	20	0	Signalized	11,100		Yes	Yes			
78th St & Tauromee Ave	8	Kansas City	Suburban Realm	4.16	1	4		\$ 16,400,000	2	32	1	Signalized	10,300		Yes				
130th St & State Ave	7	Kansas City	Suburban Realm	4.16	1	4		\$ 2,500,000	0	54	0	Signalized	26,400		Yes				
7th St Trfy & Quindaro Blvd	1	Kansas City	Urban Core	4	2	2		\$ 16,000,000	1	33	1	Signalized	5,500	Yes	Yes	Yes			
6th St & Minnesota Ave	2	Kansas City	Urban Core	4	2	2		\$ 16,300,000	2	28	1	Signalized	7,300	Yes	Yes				
Prairie Crossing & Village West Pkwy	7	Kansas City	Mixed Use/Commercial	4	2	2		\$ 16,100,000	1	37	1	Signalized	11,500						
21st St & Metropolitan Ave	3	Kansas City	Suburban Realm	4	2	2		\$ 3,200,000	2	38	0	AWSC	6,300	Yes			Yes		
98th St & 99th St	7	Kansas City	Mixed Use/Commercial	4	2	2		\$ 3,100,000	1	55	0	Signalized	17,400	Yes					
Kaw Dr & 88th St	6	Kansas City	Industrial	3.92	1	4		\$ 2,900,000	1	29	0	Signalized	1,600	Yes	Yes	Yes			
Rainbow Blvd & Olathe Blvd	3	Kansas City	Urban Core	3.92	1	4		\$ 15,700,000	1	42	1	Signalized	22,800		Yes	Yes		Yes	
7th St Trfy & Kindelberger Rd	1	Kansas City	Industrial	3.92	1	4		\$ 1,300,000	0	38	0	Signalized	30,200	Yes	Yes	Yes			
7th St Trfy & Washington Blvd	4	Kansas City	Urban Core	3.92	1	4		\$ 15,700,000	2	25	1	Signalized	11,900	Yes		Yes		Yes	
7th St Trfy & Parallel Pkwy	4	Kansas City	Urban Core	3.92	1	4		\$ 2,800,000	1	30	0	Signalized	10,700	Yes	Yes	Yes		Yes	
7th St Trfy & Sunshine Rd	1	Kansas City	Industrial	3.92	1	4		\$ 1,500,000	0	22	0	Signalized	18,400	Yes	Yes	Yes			
93rd St & 97th St	5	Kansas City	Rural Edge	3.92	1	3		\$ -	0	2	0	TWSC	5,300			Yes			
Quindaro Blvd & Fairfax Trfy	1	Kansas City	Industrial	3.92	1	4		\$ 1,400,000	0	18	0	Signalized	23,600						
Fiberglass Rd & Sunshine Rd	1	Kansas City	Industrial	3.92	1	4		\$ -	0	4	0	Signalized	9,000	Yes					
Funston Rd & Fairfax Trfy	1	Kansas City	Industrial	3.92	1	4		\$ 400,000	0	7	0	Signalized	16,500						
Village West Pkwy & State Ave	7	Kansas City	Mixed Use/Commercial	3.92	1	4		\$ 1,700,000	0	33	0	Signalized	26,300		Yes				
Sunshine Rd & McCormick Rd	1	Kansas City	Industrial	3.92	1	4		\$ 900,000	0	18	0	Signalized	4,700	Yes		Yes			
Holliday Dr & 59th St	6	Kansas City	Rural Edge	3.92	1	3		\$ 1,400,000	1	14	0	AWSC	8,300						
Mission Rd & 43rd Ave	3	Kansas City	Urban Core	3.64	1	2	1	\$ 1,700,000	0	36	0	Signalized	39,800						
State Line Rd & 43rd Ave	3	Kansas City	Urban Core	3.64	1	2	1	\$ 15,300,000	1	28	1	Signalized	26,700						
72nd St & Leavenworth Rd	8	Kansas City	Suburban Realm	3.44	1	3		\$ 2,500,000	0	33	0	Signalized	9,000	Yes		Yes			
Hutton Rd & Leavenworth Rd	5	Kansas City	Suburban Realm	3.44	1	3		\$ 1,300,000	0	23	0	Signalized	13,300	Yes					
51st St & Leavenworth Rd	1	Kansas City	Suburban Realm	3.44	1	3		\$ 2,100,000	0	34	0	Signalized	3,300			Yes			
67th St & Leavenworth Rd	8	Kansas City	Suburban Realm	3.44	1	3		\$ 1,300,000	0	23	0	Signalized	5,300	Yes		Yes			
77th St & Pomeroy Dr	8	Kansas City	Suburban Realm	3.44	1	3		\$ 1,800,000	0	30	0	Signalized	7,800			Yes			
18th St & Minnesota Ave	2	Kansas City	Urban Core	3.36	2	1		\$ 2,900,000	0	43	0	Signalized	14,500	Yes					
Argentine Blvd & Kansas Ave	2	Kansas City	Urban Core	3.36	2	1		\$ 2,100,000	1	32	0	TWSC	5,500	Yes	Yes				
Kindelberger Rd & Fairfax Trfy	1	Kansas City	Industrial	3.36	2	1		\$ 14,900,000	1	13	1	Signalized	12,300				Yes		
13th St & Quindaro Blvd	1	Kansas City	Urban Core	3.36	2	1		\$ 15,900,000	2	22	1	Signalized	6,000	Yes			Yes	Yes	
13th St & Minnesota Ave	2	Kansas City	Urban Core	3.36	2	1		\$ 2,400,000	0	37	0	Signalized	9,500	Yes					
Armstrong Ave & 78th St	8	Kansas City	Mixed Use/Commercial	3.36	2	1		\$ 16,400,000	1	29	1	TWSC	10,400		Yes				
29th St & Parallel Pkwy	4	Kansas City	Urban Core	3.36	2	1		\$ 3,000,000	1	42	0	Signalized	9,700	Yes					
38th St & Minnesota Ave	8	Kansas City	Mixed Use/Commercial	3.36	2	1		\$ 3,400,000	1	35	0	Signalized	6,600						
Minnesota Ave & Washington Blvd	4	Kansas City	Mixed Use/Commercial	3.36	2	1		\$ 2,400,000	1	28	0	Signalized	6,100	Yes					
State Ave & Speedway Blvd	7	Kansas City	Mixed Use/Commercial	3.36	2	1		\$ 2,800,000	0	53	0	Signalized	26,700	Yes	Yes				
Westview Dr & Washington Blvd	4	Kansas City	Urban Core	3.36	2	1		\$ 14,900,000	1	24	1	TWSC	8,400	Yes					
Prairie Crossing & State Ave	7	Kansas City	Mixed Use/Commercial	3.36	2	1		\$ 16,500,000	2	22	1	Signalized	19,600		Yes				
5th St & Parallel Pkwy	1	Kansas City	Urban Core	3.28	1	3		\$ 1,900,000	1	19	0	Signalized	8,000	Yes	Yes			Yes	
5th St & State Ave	4	Kansas City	Urban Core	3.28	1	3		\$ 1,000,000	0	15	0	Signalized	#VALUE!	Yes	Yes				
6th St & State Ave	2	Kansas City	Urban Core	3.28	1	3		\$ 900,000	0	12	0	Signalized	2,200	Yes	Yes				
Kansas Ave & 72nd St	7	Kansas City	Suburban Realm	3.28	2	1		\$ 29,300,000	3	8	2	AWSC	3,300	Yes	Yes				

Wyandotte County Vision Zero Action Plan

INTERSECTION Scores

Intersection Information				Scoring				Crash History				Traffic Information		Additional Considerations					
Intersection Name	District	Jurisdiction	Land Use	Total Location Score	HIN Score	HRN Score	Public Comment?	Total Crash Cost (2025 \$)	Fatal / Serious Injury Crashes	Total Crashes	VRU Crashes	Intersection Control	Daily Traffic Volume	In CIP?	Previously Planned Project?	On State System?	Sewer/Water Project Location?	Adjacent Brownfield?	Adjacent Vacant Site?
75th Dr & 74th Dr	8	Kansas City	Mixed Use/Commercial	3.28	1	3		\$ 2,800,000	0	46	0	Signalized	13,400	Yes	Yes				
83rd St & 82nd St	5	Kansas City	Suburban Realm	3.28	2	1		\$ 3,400,000	1	38	0	TWSC	4,000	Yes		Yes			
Georgia Ave & 67th St	8	Kansas City	Suburban Realm	3.28	2	1		\$ 500,000	0	7	0	TWSC	2,700	Yes					
142nd St & K-32	7	Bonner Springs	Suburban Realm	3.28	2	1		\$ 700,000	0	6	0	TWSC	1,700		Yes	Yes			
Tauromee Ave & 74th Dr	8	Kansas City	Suburban Realm	3.28	2	1		\$ 2,100,000	1	13	0	TWSC	4,000	Yes					
59th St & Swartz Rd	6	Kansas City	Rural Edge	3.04	2	1		\$ 300,000	0	4	0	TWSC	4,700						
47th St & Mill St & Kansas Ave	6	Kansas City	Suburban Realm	3	1	1	1	\$ 600,000	0	11	0	AWSC	10,100						
Mill St & Kansas Ave	2	Kansas City	Urban Core	3	1	1	1	\$ 200,000	0	3	0	Signalized	9,900	Yes	Yes				
Rosedale Park Rd & Mission Rd	3	Kansas City	Urban Core	3	1	1	1	\$ 1,500,000	0	10	0	TWSC	39,200	Yes					
Argentine Blvd & Osage Ave	2	Kansas City	Urban Core	3	1	1	1	\$ 100,000	0	6	0	AWSC	2,100	Yes			Yes		
Gibbs Rd & 42nd St	3	Kansas City	Suburban Realm	3	1	1	1	\$ 1,200,000	0	17	0	AWSC	10,500						
Puckett Rd & Mill St	3	Kansas City	Urban Core	3	1	1	1	\$ -	0	3	0	TWSC	1,200	Yes					
Metropolitan Ave & Nettleton Ave	7	Bonner Springs	Suburban Realm	3	1	1	1	\$ 800,000	0	9	0	TWSC	8,500		Yes				
Kansas Ave & 134th St	7	Bonner Springs	Suburban Realm	3	1	1	1	\$ 14,400,000	1	5	1	AWSC	5,600		Yes				
France Family Dr & Village West Pkwy	7	Kansas City	Mixed Use/Commercial	3	1	1	1	\$ 1,600,000	0	37	0	Signalized	13,900						
94th St & State Ave	7	Kansas City	Mixed Use/Commercial	3	1	1	1	\$ 1,900,000	0	31	0	Signalized	12,400		Yes				
103rd Ter & Leavenworth Rd	5	Kansas City	Mixed Use/Commercial	3	1	1	1	\$ 1,100,000	0	20	0	TWSC	4,400			Yes			
10th St & Osage Ave	2	Kansas City	Urban Core	3	1	1	1	\$ 900,000	1	12	0	TWSC	2,900	Yes			Yes		
123rd St & Parallel Pkwy	7	Kansas City	Suburban Realm	3	1	1	1	\$ 3,000,000	1	20	0	TWSC	17,000						
138th St & Metropolitan Ave	7	Bonner Springs	Suburban Realm	3	1	1	1	\$ 400,000	0	6	0	TWSC	4,300		Yes				
2nd St & Oak St	7	Bonner Springs	Mixed Use/Commercial	3	1	1	1	\$ 100,000	0	6	0	TWSC	800						
98th St & State Ave	7	Kansas City	Mixed Use/Commercial	3	1	1	1	\$ -	0	3	0	TWSC	8,700		Yes				
59th St & Oak Grove Rd	6	Kansas City	Rural Edge	2.96	1	2		\$ 100,000	0	7	0	AWSC	7,500						
59th St & 47th St	6	Kansas City	Rural Edge	2.96	1	2		\$ 1,500,000	1	12	0	AWSC	9,000					Yes	
115th St & Donahoo Rd	5	Kansas City	Rural Edge	2.96	1	2		\$ 900,000	0	12	0	AWSC	8,300	Yes					
123rd St & Donahoo Rd	5	Kansas City	Rural Edge	2.96	1	2		\$ 300,000	0	6	0	AWSC	11,300	Yes					
123rd St & Hollingsworth Rd	5	Kansas City	Rural Edge	2.96	1	2		\$ -	0	4	0	AWSC	10,900	Yes					
55th St & Douglas Ave	6	Kansas City	Rural Edge	2.96	1	2		\$ 800,000	0	13	0	Signalized	9,000	Yes					
Roe Ln & 14th St	3	Kansas City	Suburban Realm	2.72	1	2		\$ 14,700,000	1	14	1	Signalized	11,400	Yes	Yes				
65th St & Riverview Ave	8	Kansas City	Suburban Realm	2.72	1	2		\$ 1,100,000	0	13	0	Signalized	3,800						
Morse Ave & Nettleton Ave	7	Bonner Springs	Suburban Realm	2.72	1	2		\$ 500,000	0	14	0	AWSC	8,000						
115th St & Leavenworth Rd	5	Kansas City	Suburban Realm	2.72	1	2		\$ 700,000	0	8	0	AWSC	7,800	Yes					
123rd St & Leavenworth Rd	5	Kansas City	Suburban Realm	2.72	1	2		\$ -	0	4	0	AWSC	9,700	Yes					
42nd St & Shawnee Dr	6	Kansas City	Suburban Realm	2.72	1	2		\$ 15,000,000	1	25	1	AWSC	10,500	Yes					
55th St & Swartz Rd	6	Kansas City	Suburban Realm	2.72	1	2		\$ 1,000,000	0	23	0	AWSC	13,300	Yes					
Shawnee Dr & 47th St	6	Kansas City	Suburban Realm	2.72	1	2		\$ 14,700,000	1	9	1	AWSC	13,400						
Metropolitan Ave & 24th St	3	Kansas City	Suburban Realm	2.72	1	2		\$ 1,600,000	0	21	0	AWSC	12,000						
Hurrebrink Rd & 91st St	5	Kansas City	Suburban Realm	2.72	1	2		\$ 600,000	0	9	0	AWSC	1,800	Yes	Yes	Yes			
7th St Trfy & 24th St	2	Kansas City	Urban Core	2.64	1	2		\$ 1,200,000	0	28	0	Signalized	11,400	Yes		Yes			
12th St & Metropolitan Ave	3	Kansas City	Industrial	2.64	1	2		\$ 1,300,000	0	21	0	AWSC	6,100		Yes			Yes	
13th St & State Ave	2	Kansas City	Urban Core	2.64	1	2		\$ 2,900,000	0	34	0	Signalized	7,600	Yes	Yes				
90th St & State Ave	7	Kansas City	Mixed Use/Commercial	2.64	1	2		\$ 2,100,000	1	22	0	Signalized	12,000		Yes				
8th St & State Ave	2	Kansas City	Urban Core	2.64	1	2		\$ 15,700,000	1	18	1	Signalized	5,300	Yes	Yes		Yes		
86th St & State Ave	7	Kansas City	Mixed Use/Commercial	2.64	1	2		\$ 16,300,000	2	24	1	Signalized	10,500	Yes	Yes				
Kaw Dr & Martinek Ln	7	Bonner Springs	Suburban Realm	2	1	1		\$ -	0	2	0	TWSC	1,000	Yes	Yes	Yes			
Kaw Dr & Morse Ave	7	Bonner Springs	Suburban Realm	2	1	1		\$ 2,200,000	1	14	0	TWSC	2,700	Yes	Yes	Yes			
Kaw Dr & Swartz Rd	6	Kansas City	Industrial	2	1	1		\$ 1,100,000	0	19	0	Signalized	900	Yes	Yes	Yes			
Kaw Dr & 86th St	6	Kansas City	Industrial	2	1	1		\$ 1,600,000	0	14	0	TWSC	600	Yes	Yes	Yes			
Kaw Dr & 72nd St	6	Kansas City	Industrial	2	1	1		\$ 4,300,000	4	18	0	TWSC	2,000	Yes	Yes	Yes			
Kaw Dr & K-32	7	Bonner Springs	Mixed Use/Commercial	2	1	1		\$ 800,000	0	13	0	Signalized	9,400		Yes	Yes			
7th St Trfy & Funston Rd	1	Kansas City	Industrial	2	1	1		\$ 800,000	0	9	0	TWSC	7,100	Yes	Yes	Yes			
K-7 Hwy & Riverview Ave	7	Bonner Springs	Suburban Realm	2	1	1		\$ 1,300,000	0	25	0	TWSC	25,000	Yes	Yes	Yes			
14th St & Douglas Ave	3	Kansas City	Suburban Realm	2	1	1		\$ 15,100,000	2	4	1	AWSC	4,300		Yes				
14th St & Ruby Ave	3	Kansas City	Suburban Realm	2	1	1		\$ 400,000	0	14	0	AWSC	4,600		Yes		Yes		
14th St & Metropolitan Ave	3	Kansas City	Industrial	2	1	1		\$ 800,000	1	4	0	TWSC	5,900				Yes		
14th St & Steele Rd	3	Kansas City	Suburban Realm	2	1	1		\$ 1,500,000	1	10	0	AWSC	3,500		Yes				
18th St & Washington Blvd	4	Kansas City	Urban Core	2	1	1		\$ 1,600,000	0	23	0	Signalized	9,000	Yes	Yes				
5th St & Quindaro Blvd	1	Kansas City	Urban Core	2	1	1		\$ 600,000	0	9	0	AWSC	4,000	Yes	Yes			Yes	
6th St & Washington Blvd	4	Kansas City	Urban Core	2	1	1		\$ 600,000	0	10	0	Signalized	4,300	Yes					
47th St & Gibbs Rd	6	Kansas City	Suburban Realm	2	1	1		\$ 1,900,000	1	12	0	AWSC	12,200						
Kansas Ave & 82nd St	7	Kansas City	Suburban Realm	2	1	1		\$ 800,000	1	1	0	TWSC	1,200		Yes				
Kansas Ave & 98th St	7	Edwardsville	Suburban Realm	2	1	1		\$ 500,000	0	5	0	TWSC	1,100		Yes				
Kansas Ave & 78th St	6	Kansas City	Suburban Realm	2	1	1		\$ 900,000	0	18	0	AWSC	3,800	Yes	Yes				
Kansas Ave & 86th St	7	Kansas City	Suburban Realm	2	1	1		\$ 200,000	0	4	0	AWSC	2,300		Yes				
Pomeroy Dr & Barnes Dr	8	Kansas City	Rural Edge	2	1	1		\$ 800,000	1	2	0	TWSC	200						
Mill St & Osage Ave	2	Kansas City	Urban Core	2	1	1		\$ 200,000	0	8	0	TWSC	3,800	Yes			Yes		
Mill St & Cheyenne Ave	2	Kansas City	Industrial	2	1	1		\$ -	0	3	0	TWSC	1,300				Yes		
12th St & Argentine Blvd	2	Kansas City	Urban Core	2	1	1		\$ 200,000	0	9	0	Signalized	4,900	Yes			Yes		
12th St & Ruby Ave	3	Kansas City	Suburban Realm	2	1	1		\$ 300,000	0	3	0	AWSC	3,500						
12th St & Cheyenne Ave	2	Kansas City	Industrial	2	1	1		\$ 200,000	0	4	0	TWSC	5,100	Yes			Yes		
12th St & Kansas Ave	2	Kansas City	Urban Core	2	1	1		\$ 2,000,000	1	32	0	Signalized	10,900	Yes	Yes				
47th St & Mission Rd	3	Kansas City	Urban Core	2	1	1		\$ 1,400,000	0	34	0	Signalized	21,300	Yes	Yes				
47th St & Puckett Rd	3	Kansas City	Urban Core	2	1	1		\$ 200,000	0	4	0	TWSC	#VALUE!	Yes	Yes				
Speaker Rd & 65th St	6	Kansas City	Suburban Realm	2	1	1		\$ 700,000	0	5	0	TWSC	2,800						
Strong Ave & 30th St	3	Kansas City	Suburban Realm	2	1	1		\$ 14,400,000	1	5	1	TWSC	2,500	Yes					
Strong Ave & Goddard Via	3	Kansas City	Suburban Realm	2	1	1		\$ 1,100,000	0	11	0	TWSC	3,600	Yes					
Strong Ave & 42nd St	6	Kansas City	Suburban Realm	2	1	1		\$ 800,000	0	15	0	AWSC	6,800	Yes					
Strong Ave & 24th St	3	Kansas City	Suburban Realm	2	1	1		\$ 200,000	0	1	0	TWSC	4,400						

INTERSECTION Scores

Intersection Information				Scoring				Crash History				Traffic Information		Additional Considerations					
Intersection Name	District	Jurisdiction	Land Use	Total Location Score	HIN Score	HRN Score	Public Comment?	Total Crash Cost (2025 \$)	Fatal / Serious Injury Crashes	Total Crashes	VRU Crashes	Intersection Control	Daily Traffic Volume	In CIP?	Previously Planned Project?	On State System?	Sewer/Water Project Location?	Adjacent Brownfield?	Adjacent Vacant Site?
Woodend Ave & 34th St	3	Kansas City	Suburban Realm	2	1	1		\$ 200,000	0	1	0	TWSC	3,700	Yes					
Woodend Ave & Espenlaub Ln	3	Kansas City	Suburban Realm	2	1	1		\$ -	0	0	0	TWSC	500						
102nd St & Riverview Ave	7	Edwardsville	Suburban Realm	2	1	1		\$ -	0	1	0	TWSC	500		Yes				
102nd St & Swartz Rd	7	Edwardsville	Suburban Realm	2	1	1		\$ -	0	0	0	AWSC	600						
118th St & Riverview Ave	7	Bonner Springs	Suburban Realm	2	1	1		\$ 300,000	0	3	0	AWSC	400		Yes				
13th St & Grandview Blvd	2	Kansas City	Urban Core	2	1	1		\$ 600,000	0	13	0	TWSC	2,300	Yes					
30th St & Metropolitan Ave	3	Kansas City	Suburban Realm	2	1	1		\$ 1,400,000	1	10	0	TWSC	8,300						
Haas Dr & Steele Rd	3	Kansas City	Suburban Realm	2	1	1		\$ 1,600,000	2	4	0	TWSC	2,900						
47th St & Georgia Ave	1	Kansas City	Suburban Realm	2	1	1		\$ 14,900,000	1	10	1	AWSC	3,600						
104th St & 4th St	7	Edwardsville	Suburban Realm	2	1	1		\$ -	0	1	0	TWSC	3,100	Yes	Yes				
104th St & Swartz Rd	7	Edwardsville	Suburban Realm	2	1	1		\$ -	0	1	0	TWSC	900						
Muncie Dr & State Ave	1	Kansas City	Mixed Use/Commercial	2	1	1		\$ 1,300,000	0	21	0	Signalized	7,400		Yes				
51st St & Swartz Rd	6	Kansas City	Suburban Realm	2	1	1		\$ 300,000	0	3	0	AWSC	5,300						
51st St & Metropolitan Ave	6	Kansas City	Suburban Realm	2	1	1		\$ -	0	0	0	TWSC	2,000	Yes					
51st St & Gibbs Rd	6	Kansas City	Suburban Realm	2	1	1		\$ 500,000	0	5	0	TWSC	4,400						
51st St & Douglas Ave	6	Kansas City	Suburban Realm	2	1	1		\$ 200,000	0	5	0	AWSC	2,500				Yes		
51st St & Metropolitan Ave	6	Kansas City	Suburban Realm	2	1	1		\$ 400,000	0	13	0	TWSC	3,300	Yes					
51st St & Gibbs Rd	6	Kansas City	Suburban Realm	2	1	1		\$ -	0	0	0	TWSC	4,400						
51st St & 47th St	6	Kansas City	Suburban Realm	2	1	1		\$ -	0	2	0	TWSC	11,100						
69th St & State Ave	8	Kansas City	Mixed Use/Commercial	2	1	1		\$ 1,100,000	0	19	0	TWSC	8,100		Yes				
74th St & Holliday Dr	6	Kansas City	Industrial	2	1	1		\$ -	0	4	0	TWSC	11,200						
77th St & Longwood Ave	5	Kansas City	Suburban Realm	2	1	1		\$ -	0	2	0	TWSC	5,300						
78th St & Holliday Dr	6	Kansas City	Industrial	2	1	1		\$ 400,000	0	3	0	TWSC	10,700						
78th St & Quivira Ln	6	Lake Quivira	Rural Edge	2	1	1		\$ -	0	0	0	TWSC	5,300						
Argentine Blvd & 10th St	2	Kansas City	Urban Core	2	1	1		\$ 200,000	0	7	0	AWSC	1,500						
Argentine Blvd & 14th St	2	Kansas City	Industrial	2	1	1		\$ 400,000	0	3	0	TWSC	2,100				Yes		
Douglas Ave & Shawnee Rd	3	Kansas City	Suburban Realm	2	1	1		\$ 1,000,000	1	5	0	TWSC	2,700						
Douglas Ave & 10th St	3	Kansas City	Suburban Realm	2	1	1		\$ -	0	1	0	TWSC	1,200						
Kindelberger Rd & Fiberglass Rd	1	Kansas City	Industrial	2	1	1		\$ -	0	1	0	TWSC	16,800						
Georgia Ave & 55th St	1	Kansas City	Suburban Realm	2	1	1		\$ 700,000	0	21	0	AWSC	3,200						
Georgia Ave & 38th St	1	Kansas City	Urban Core	2	1	1		\$ 14,700,000	1	10	1	AWSC	10,800						
Georgia Ave & 51st St	1	Kansas City	Suburban Realm	2	1	1		\$ 400,000	0	7	0	AWSC	2,600						
Georgia Ave & 59th St	1	Kansas City	Suburban Realm	2	1	1		\$ 600,000	0	15	0	TWSC	6,100						
53rd St & Gibbs Rd	6	Kansas City	Suburban Realm	2	1	1		\$ 500,000	0	4	0	TWSC	9,400	Yes					
34th St & Gibbs Rd	3	Kansas City	Suburban Realm	2	1	1		\$ 100,000	0	5	0	TWSC	3,700	Yes					
Grandview Blvd & Park Dr	2	Kansas City	Urban Core	2	1	1		\$ 1,400,000	1	11	0	TWSC	7,700						
Olathe Blvd & State Line Rd	3	Kansas City	Urban Core	2	1	1		\$ 14,500,000	1	15	1	AWSC	10,200						
Sortor Dr & 49th Dr	1	Kansas City	Rural Edge	2	1	1		\$ 200,000	0	2	0	TWSC	600						
13th St & Washington Blvd	4	Kansas City	Urban Core	2	1	1		\$ 900,000	0	21	0	Signalized	4,600		Yes				
13th St & Grandview Blvd	2	Kansas City	Urban Core	2	1	1		\$ -	0	3	0	TWSC	2,300	Yes					
Mill St & Rosedale Dr	3	Kansas City	Suburban Realm	2	1	1		\$ 400,000	0	6	0	AWSC	700						
Key Ln & Douglas Ave	6	Kansas City	Suburban Realm	2	1	1		\$ 900,000	1	2	0	TWSC	4,600	Yes					
Speaker Rd & 55th St	6	Kansas City	Industrial	2	1	1		\$ -	0	4	0	TWSC	2,900						
Georgia Ave & 83rd St	5	Kansas City	Suburban Realm	2	1	1		\$ -	0	2	0	TWSC	2,900						
Wolcott Dr & 107th St	5	Kansas City	Industrial	2	1	1		\$ 500,000	0	13	0	TWSC	5,000			Yes			
Wolcott Dr & Sam Clark Ln	5	Kansas City	Rural Edge	2	1	1		\$ 1,100,000	1	6	0	TWSC	2,500			Yes			
2nd St & Nettleton Ave	7	Bonner Springs	Suburban Realm	2	1	1		\$ -	0	0	0	TWSC	600						
Oak St & Nettleton Ave	7	Bonner Springs	Mixed Use/Commercial	2	1	1		\$ -	0	1	0	TWSC	700						
K-32 & Nettleton Ave	7	Bonner Springs	Mixed Use/Commercial	2	1	1		\$ 500,000	0	9	0	Signalized	7,700		Yes	Yes			
Holliday Dr & 69th St	6	Kansas City	Industrial	2	1	1		\$ 900,000	0	8	0	TWSC	5,900						
Holliday Dr & 65th St	6	Kansas City	Rural Edge	2	1	1		\$ 800,000	1	5	0	TWSC	4,200						
Holliday Dr & Inland Dr	6	Kansas City	Industrial	2	1	1		\$ 200,000	0	5	0	TWSC	4,200						
Holliday Dr & Quivira Ln	6	Lake Quivira	Industrial	2	1	1		\$ 300,000	0	7	0	TWSC	7,800						
34th St & Leavenworth Rd	1	Kansas City	Urban Core	2	1	1		\$ 1,000,000	0	17	0	TWSC	4,300	Yes					
Archer Rd & Loring Ln	7	Kansas City	Rural Edge	2	1	1		\$ 200,000	0	1	0	TWSC	1,900						
Potter Rd & 123rd St	5	Kansas City	Rural Edge	2	1	1		\$ 200,000	0	4	0	AWSC	7,400						
Hutton Rd & Independence Blvd	5	Kansas City	Suburban Realm	2	1	1		\$ 400,000	0	6	0	TWSC	2,500						
Hutton Rd & 107th St	5	Kansas City	Rural Edge	2	1	1		\$ 1,000,000	1	6	0	TWSC	6,600			Yes			
Hutton Rd & Donahoo Rd	5	Kansas City	Mixed Use/Commercial	2	1	1		\$ 1,400,000	0	23	0	Signalized	6,800		Yes				
Hutton Rd & Hollingsworth Rd	5	Kansas City	Rural Edge	2	1	1		\$ -	0	3	0	TWSC	5,800						
107th St & Leavenworth Rd	5	Kansas City	Mixed Use/Commercial	2	1	1		\$ 300,000	0	5	0	TWSC	5,800	Yes					
26th St & Shawnee Dr	3	Kansas City	Suburban Realm	2	1	1		\$ 300,000	0	4	0	TWSC	1,300						
26th St & Steele Rd	3	Kansas City	Suburban Realm	2	1	1		\$ 200,000	0	4	0	TWSC	5,200						
Hoel Pkwy & Washington Blvd	4	Kansas City	Mixed Use/Commercial	2	1	1		\$ -	0	0	0	Yield	1,600	Yes					
Hoel Pkwy & Minnesota Ave	4	Kansas City	Mixed Use/Commercial	2	1	1		\$ -	0	4	0	TWSC	4,000	Yes					
Hoel Pkwy & State Ave	4	Kansas City	Mixed Use/Commercial	2	1	1		\$ 700,000	0	12	0	Signalized	9,800	Yes	Yes				
Armstrong Ave & 74th Dr	8	Kansas City	Mixed Use/Commercial	2	1	1		\$ 1,200,000	1	9	0	TWSC	4,500	Yes					
Kansas Ave & 138th St	7	Bonner Springs	Suburban Realm	2	1	1		\$ 100,000	0	5	0	TWSC	6,400		Yes				
Kansas Ave & 142nd St	7	Bonner Springs	Suburban Realm	2	1	1		\$ 200,000	0	2	0	AWSC	2,800		Yes				
Kansas Ave & 122nd St	7	Bonner Springs	Suburban Realm	2	1	1		\$ -	0	1	0	TWSC	400		Yes				
110th St & Hutton Rd	5	Kansas City	Suburban Realm	2	1	1		\$ 600,000	0	12	0	TWSC	15,100	Yes					
Stillwell Rd & Loring Ln	7	Bonner Springs	Suburban Realm	2	1	1		\$ -	0	1	0	TWSC	1,800						
Stillwell Rd & 142nd St	7	Bonner Springs	Suburban Realm	2	1	1		\$ -	0	0	0	TWSC	600						
Morse Ave & 138th St	7	Bonner Springs	Suburban Realm	2	1	1		\$ 100,000	0	1	0	TWSC	4,400		Yes				
57th St & Kaw Dr	8	Kansas City	Industrial	2	1	1		\$ 2,400,000	1	31	0	Signalized	43,100	Yes	Yes		Yes		
98th St & Riverview Ave	7	Edwardsville	Mixed Use/Commercial	2	1	1		\$ -	0	0	0	TWSC	400		Yes				
98th St & Swartz Rd	7	Edwardsville	Suburban Realm	2	1	1		\$ 100,000	0	1	0	AWSC	200		Yes				
98th St & Woodend Rd	7	Edwardsville	Industrial	2	1	1		\$ 100,000	0	7	0	Signalized	3,900						

INTERSECTION Scores

Intersection Information				Scoring				Crash History				Traffic Information		Additional Considerations					
Intersection Name	District	Jurisdiction	Land Use	Total Location Score	HIN Score	HRN Score	Public Comment?	Total Crash Cost (2025 \$)	Fatal / Serious Injury Crashes	Total Crashes	VRU Crashes	Intersection Control	Daily Traffic Volume	In CIP?	Previously Planned Project?	On State System?	Sewer/Water Project Location?	Adjacent Brownfield?	Adjacent Vacant Site?
98th St & State Ave	7	Kansas City	Mixed Use/Commercial	2	1	1		\$ 700,000	0	18	0	TWSC	12,000		Yes				
Metropolitan Ave & 88th St	6	Kansas City	Suburban Realm	2	1	1		\$ -	0	1	0	TWSC	100						
France Family Dr & 98th St	7	Kansas City	Mixed Use/Commercial	2	1	1		\$ 300,000	0	6	0	TWSC	5,800						
126th St & Delaware Pkwy	7	Kansas City	Suburban Realm	2	1	1		\$ 400,000	0	4	0	TWSC	5,200						
94th St & Riverview Ave	7	Kansas City	Suburban Realm	2	1	1		\$ 14,100,000	1	8	1	TWSC	1,500		Yes				
Douglas Ave & Inland Dr	6	Kansas City	Industrial	2	1	1		\$ 1,000,000	1	6	0	TWSC	4,100						
Washington Blvd & 10th St	4	Kansas City	Urban Core	2	1	1		\$ 1,600,000	1	12	0	Signalized	6,100	Yes	Yes		Yes		
Washington Blvd & 3rd St	4	Kansas City	Urban Core	2	1	1		\$ 800,000	0	16	0	TWSC	4,400		Yes				
Washington Blvd & 9th St	4	Kansas City	Urban Core	2	1	1		\$ 800,000	0	18	0	Signalized	3,600	Yes			Yes		
Washington Blvd & Waterway Dr	4	Kansas City	Urban Core	2	1	1		\$ 300,000	0	8	0	Signalized	1,900	Yes	Yes				
Independence Blvd & Donahoo Rd	5	Kansas City	Suburban Realm	2	1	1		\$ 200,000	0	2	0	TWSC	3,000	Yes					
103rd Ter & Georgia Ave	5	Kansas City	Mixed Use/Commercial	2	1	1		\$ 300,000	0	2	0	TWSC	3,800	Yes					
Kaw Dr & Scheidt Ln	7	Bonner Springs	Suburban Realm	2	1	1		\$ -	0	3	0	TWSC	4,600		Yes				
Scheidt Ln & K-32	7	Bonner Springs	Suburban Realm	2	1	1		\$ -	0	2	0	TWSC	3,800		Yes		Yes		
Goddard Via & Kansas Ave	6	Kansas City	Industrial	2	1	1		\$ 1,500,000	1	20	0	TWSC	3,500		Yes	Yes			
69th St & 65th St	6	Kansas City	Rural Edge	2	1	1		\$ -	0	2	0	TWSC	1,100						
10th St & Quindaro Blvd	1	Kansas City	Urban Core	2	1	1		\$ 400,000	0	14	0	Signalized	6,900	Yes			Yes		
10th St & Sunshine Rd	1	Kansas City	Industrial	2	1	1		\$ -	0	0	0	TWSC	500						
10th St & Cheyenne Ave	2	Kansas City	Industrial	2	1	1		\$ 600,000	0	5	0	TWSC	1,800				Yes		
110th St & Riverview Ave	7	Bonner Springs	Suburban Realm	2	1	1		\$ 1,000,000	0	9	0	Roundabout	8,900		Yes				
110th St & Village West Pkwy	7	Kansas City	Mixed Use/Commercial	2	1	1		\$ 1,100,000	1	19	0	Signalized	18,700	Yes					
115th St & Hollingsworth Rd	5	Kansas City	Rural Edge	2	1	1		\$ 300,000	0	3	0	AWSC	8,000	Yes					
115th St & Paralel Pkwy	5	Kansas City	Suburban Realm	2	1	1		\$ 1,500,000	0	15	0	TWSC	15,500	Yes					
115th St & Georgia Ave	5	Kansas City	Suburban Realm	2	1	1		\$ 300,000	0	5	0	TWSC	4,300	Yes					
134th St & Delaware Pkwy	7	Kansas City	Rural Edge	2	1	1		\$ -	0	1	0	TWSC	1,100						
134th St & Paralel Pkwy	7	Kansas City	Rural Edge	2	1	1		\$ 200,000	0	3	0	TWSC	13,900						
138th St & K-32	7	Bonner Springs	Suburban Realm	2	1	1		\$ -	0	0	0	TWSC	2,900		Yes	Yes			
21st St & Ruby Ave	3	Kansas City	Suburban Realm	2	1	1		\$ 1,000,000	0	19	0	AWSC	1,000	Yes			Yes		
18th St & Shawnee Dr	3	Kansas City	Suburban Realm	2	1	1		\$ 200,000	0	4	0	TWSC	900	Yes					
18th St & Merriam Ln	3	Kansas City	Urban Core	2	1	1		\$ 600,000	0	13	0	TWSC	7,600	Yes	Yes				
18th St & 21st St	3	Kansas City	Suburban Realm	2	1	1		\$ 1,400,000	0	23	0	AWSC	16,100	Yes					
Quindaro Blvd & 3rd St	1	Kansas City	Urban Core	2	1	1		\$ -	0	4	0	AWSC	2,200	Yes					
Kaw Dr & 2nd St	7	Bonner Springs	Suburban Realm	2	1	1		\$ 500,000	0	2	0	TWSC	3,000		Yes				
2nd St & K-32	7	Bonner Springs	Mixed Use/Commercial	2	1	1		\$ 14,500,000	1	11	1	TWSC	3,100		Yes	Yes			
34th St & Merriam Ln	6	Kansas City	Urban Core	2	1	1		\$ 900,000	0	10	0	Signalized	5,800	Yes	Yes				
3rd St & Richmond Ave	4	Kansas City	Urban Core	2	1	1		\$ 300,000	0	4	0	AWSC	2,300		Yes			Yes	Yes
3rd St & Fairfax Trfy	4	Kansas City	Urban Core	2	1	1		\$ 1,400,000	0	23	0	TWSC	13,300		Yes		Yes		
42nd St & Swartz Rd	6	Kansas City	Suburban Realm	2	1	1		\$ 1,000,000	0	10	0	AWSC	6,800						
49th Dr & Leavenworth Rd	1	Kansas City	Suburban Realm	2	1	1		\$ 400,000	0	6	0	TWSC	5,200			Yes			
55th St & Inland Dr	6	Kansas City	Industrial	2	1	1		\$ 1,800,000	0	14	0	Signalized	14,900	Yes					
55th St & Oak Grove Rd	6	Kansas City	Rural Edge	2	1	1		\$ 400,000	0	8	0	AWSC	6,600						
55th St & 47th St	6	Kansas City	Rural Edge	2	1	1		\$ 300,000	0	6	0	TWSC	11,600						
59th St & Cernech Rd	8	Kansas City	Suburban Realm	2	1	1		\$ -	0	2	0	TWSC	2,500						
59th St & Brenner Dr	8	Kansas City	Rural Edge	2	1	1		\$ -	0	2	0	TWSC	1,500						
63rd St & Cernech Rd	8	Kansas City	Suburban Realm	2	1	1		\$ 200,000	0	2	0	AWSC	200						
63rd St & Georgia Ave	8	Kansas City	Suburban Realm	2	1	1		\$ 400,000	0	6	0	TWSC	3,600						
65th St & Oak Grove Rd	6	Kansas City	Rural Edge	2	1	1		\$ -	0	4	0	TWSC	1,500						
65th St & 47th St	6	Kansas City	Rural Edge	2	1	1		\$ 100,000	0	5	0	TWSC	1,300						
78th St & Swartz Rd	6	Kansas City	Suburban Realm	2	1	1		\$ 800,000	1	4	0	AWSC	2,600	Yes	Yes				
82nd St & Tauroomee Ave	8	Kansas City	Suburban Realm	2	1	1		\$ 200,000	0	8	0	AWSC	2,600						
83rd St & Georgia Ave	5	Kansas City	Suburban Realm	2	1	1		\$ 300,000	0	4	0	TWSC	1,500						
88th St & Swartz Rd	6	Kansas City	Suburban Realm	2	1	1		\$ -	0	0	0	TWSC	100						
91st St & Georgia Ave	5	Kansas City	Suburban Realm	2	1	1		\$ 900,000	1	3	0	AWSC	1,700	Yes	Yes				
126th St & Riverview Ave	7	Bonner Springs	Suburban Realm	2	1	1		\$ -	0	0	0	TWSC	1,000	Yes	Yes				
99th St & Leavenworth Rd	5	Kansas City	Mixed Use/Commercial	2	1	1		\$ 1,300,000	1	11	0	Signalized	3,700	Yes		Yes			
126th St & Paralel Pkwy	7	Kansas City	Suburban Realm	2	1	1		\$ 1,000,000	0	18	0	TWSC	16,000						
99th St & Georgia Ave	5	Kansas City	Mixed Use/Commercial	2	1	1		\$ 100,000	0	6	0	TWSC	6,100	Yes					
Armourdale Pkwy & Osage Ave	2	Kansas City	Industrial	2	1	1		\$ -	0	0	0	AWSC	3,800	Yes					
Armourdale Pkwy & Cheyenne Ave	2	Kansas City	Industrial	2	1	1		\$ -	0	2	0	TWSC	2,000						
Armourdale Pkwy & Kansas Ave	2	Kansas City	Industrial	2	1	1		\$ -	0	3	0	Signalized	10,200	Yes	Yes				
Cernech Rd & 67th St	8	Kansas City	Suburban Realm	2	1	1		\$ -	0	1	0	AWSC	1,100						
Espenlaub Ln & Shawnee Dr	3	Kansas City	Suburban Realm	2	1	1		\$ -	0	2	0	AWSC	1,500						
Espenlaub Ln & Merriam Ln	3	Kansas City	Urban Core	2	1	1		\$ 500,000	0	4	0	TWSC	7,500	Yes	Yes				
Fiberglass Rd & Funston Rd	1	Kansas City	Industrial	2	1	1		\$ 200,000	0	2	0	TWSC	2,200						
Fiberglass Rd & Stanley Rd	1	Kansas City	Industrial	2	1	1		\$ -	0	1	0	TWSC	1,400						
Kaw Dr & Oak St	7	Bonner Springs	Mixed Use/Commercial	2	1	1		\$ -	0	3	0	TWSC	7,100		Yes				
Grandview Blvd & N 14th St	2	Kansas City	Urban Core	2	1	1		\$ 600,000	0	22	0	AWSC	1,300	Yes					
Metropolitan Ave & 134th St	7	Bonner Springs	Suburban Realm	2	1	1		\$ -	0	2	0	AWSC	2,300		Yes				
61st St & Riverview Ave	8	Kansas City	Suburban Realm	2	1	1		\$ 300,000	0	3	0	TWSC	500						
Riverview Ave & 134th St	7	Bonner Springs	Suburban Realm	2	1	1		\$ -	0	1	0	AWSC	900	Yes	Yes				
Riverview Ave & 142nd St	7	Bonner Springs	Suburban Realm	2	1	1		\$ -	0	0	0	TWSC	800		Yes				
Riverview Ave & 122nd St	7	Bonner Springs	Suburban Realm	2	1	1		\$ 400,000	0	2	0	TWSC	500		Yes				
Swartz Rd & 86th St	6	Kansas City	Suburban Realm	2	1	1		\$ 200,000	0	3	0	AWSC	700						
Tauroomee Ave & 86th St	7	Kansas City	Suburban Realm	2	1	1		\$ -	0	2	0	TWSC	3,700						
86th St & Paralel Pkwy	5	Kansas City	Suburban Realm	2	1	1		\$ 400,000	0	14	0	TWSC	10,700	Yes					
Leavenworth Rd & 27th St	1	Kansas City	Urban Core	2	1	1		\$ 14,400,000	1	9	1	AWSC	2,100	Yes	Yes				
Merriam Ln & 39th St	6	Kansas City	Suburban Realm	2	1	1		\$ -	0	1	0	TWSC	800						
Oliver St & 39th St	6	Kansas City	Suburban Realm	2	1	1		\$ -	0	1	0	TWSC	900						

Wyandotte County Vision Zero Action Plan

INTERSECTION Scores

Intersection Information				Scoring				Crash History				Traffic Information		Additional Considerations					
Intersection Name	District	Jurisdiction	Land Use	Total Location Score	HIN Score	HRN Score	Public Comment?	Total Crash Cost (2025 \$)	Fatal / Serious Injury Crashes	Total Crashes	VRU Crashes	Intersection Control	Daily Traffic Volume	In CIP?	Previously Planned Project?	On State System?	Sewer/Water Project Location?	Adjacent Brownfield?	Adjacent Vacant Site?
Grandview Blvd & N 14th St	2	Kansas City	Urban Core	2	1	1		\$ 300,000	0	13	0	AWSC	1,300	Yes					
61st St & State Ave	8	Kansas City	Mixed Use/Commercial	2	1	1		\$ 2,300,000	1	10	0	TWSC	6,700		Yes				
State Ave & Waterway Dr	4	Kansas City	Urban Core	2	1	1		\$ 400,000	0	5	0	TWSC	2,600	Yes	Yes				
14th St & Kansas Ave	2	Kansas City	Industrial	2	1	1		\$ 1,100,000	0	22	0	Signalized	10,600	Yes	Yes				
104th St & Edwardsville Dr	7	Edwardsville	Suburban Realm	2	1	1		\$ -	0	1	0	TWSC	1,900		Yes				
72nd St & Georgia Ave	8	Kansas City	Suburban Realm	2	1	1		\$ -	0	2	0	TWSC	8,500	Yes					
Eaton St & 36th Ave	3	Kansas City	Urban Core	2	1	1		\$ 600,000	0	12	0	TWSC	6,900	Yes					
55th St & 49th Dr	1	Kansas City	Rural Edge	2	1	1		\$ -	0	2	0	AWSC	1,100						
Wolcott Dr & 93rd St	5	Kansas City	Rural Edge	2	1	1		\$ -	0	0	0	TWSC	3,700						
Polfer Rd & Sam Clark Ln	5	Kansas City	Rural Edge	2	1	1		\$ -	0	2	0	AWSC	2,600						
79th St & 82nd St	5	Kansas City	Rural Edge	2	1	1		\$ -	0	2	0	TWSC	200						
34th St & Woodland Blvd	3	Kansas City	Suburban Realm	2	1	1		\$ 700,000	0	6	0	AWSC	6,600	Yes					
93rd St & Hurrelbrink Rd	5	Kansas City	Mixed Use/Commercial	2	1	1		\$ 100,000	0	6	0	TWSC	3,200		Yes				
Quindaro Blvd & 27th St	1	Kansas City	Urban Core	2	1	1		\$ 700,000	0	19	0	Signalized	4,000	Yes	Yes				
107th St & Hutton Rd	5	Kansas City	Mixed Use/Commercial	2	1	1		\$ -	0	0	0	TWSC	4,800						
110th St & State Ave	7	Kansas City	Mixed Use/Commercial	2	1	1		\$ 15,100,000	1	26	1	Signalized	24,900		Yes				
Washington Blvd (roundabout)	4	Kansas City	Mixed Use/Commercial	2	1	1		\$ -	0	1	0	Roundabout	300	Yes					
53rd St & Oak Grove Rd	6	Kansas City	Suburban Realm	2	1	1		\$ -	0	4	0	AWSC	2,000						
Kaw Dr & 59th Ln	6	Kansas City	Industrial	2	1	1		\$ -	0	2	0	Signalized	2,600	Yes	Yes	Yes			
Parallel Pkwy & 142nd St	7	Kansas City		0	1	1		\$ 100,000	0	1	0	TWSC	11,100						



Report to Public Works & Safety Standing Committee

MEETING DATE	PRESENTER	DEPARTMENT
	<div data-bbox="586 394 1036 478" style="border: 1px solid black; padding: 5px;"> Troy Shaw, County Engineer/ Director of Public Works </div> tshaw@wycokck.org x5416	Public Works
AGENDA ITEM #4.2.		
PRESENTATION: STORMWATER UTILITY RATES		
BACKGROUND		
<p>The Public Works Department is requesting to present the enterprise utility fund rate approval process separately from the general fund mill levy to allow focused discussion on utility requirements, needs, and long-term goals. These goals include meeting regulatory requirements, ensuring transparency and equity for ratepayers, maintaining fiscal and fiduciary responsibility, and minimizing generational debt while supporting sustainable development.</p> <p>The Unified Government of Wyandotte County and Kansas City, Kansas (UG) established the stormwater utility to fund the programming, operations, maintenance, and capital improvements associated with stormwater infrastructure. The financial model and rate structure—developed through workshops and formalized by Ordinance 157-22 and Ordinance 158-22—serve as the basis for the proposed 2026 and 2027 revenue goals.</p> <p>Public Works will present three level-of-service options for Commission consideration. Each option outlines specific program opportunities, projects, and studies, with the associated budget to be submitted during the 2026 amended and 2027 budget process.</p>		
RECOMMENDATION		
<p>Approve</p> <p>Approval to move forward to the Full Commission Meeting for approval. At the Full Commission Meeting, Public Works will request approval for selecting one option.</p>		
BUDGET IMPACTS / FINANCIAL CONSIDERATIONS		
N/A		
LEGAL/ POLICY CONSIDERATIONS		
N/A		
ATTACHMENTS		
03.6.2026-Enterprise-Rates-Deck		

Approved by Mayor/Administrator to add to agenda.



Enterprise Fund Rates

BUDGET DIRECTION

Sewer, Stormwater & Solid Waste



Public Works & Safety Standing Committee

March 16, 2026

DECISIONS

01

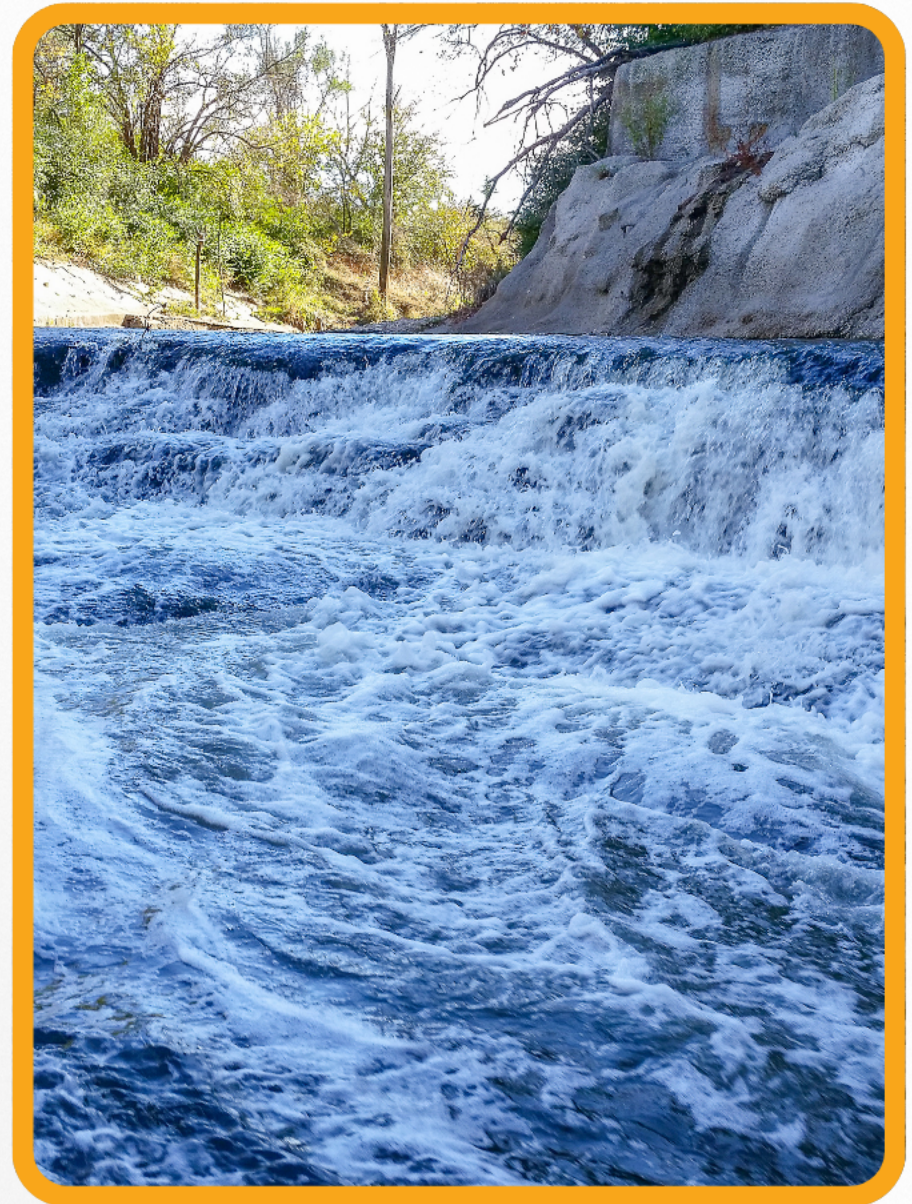
Separate Enterprise Rate Approvals from the Budget Process

- **General Fund:** Allocates tax dollars across many services.
- **Enterprise Funds:** Set service levels paid for by user charges.

02

Provide Rate Direction

- Select desired service level (Required, Responsible, Resilient)
- Set 2026-2027 rates for Wastewater, Stormwater & Solid Waste.



LEVELS OF SERVICE



A **Levels of Service** approach focuses resources around **agreed-upon goals and replaces “intuition” with clear service expectations**. It links service choices to costs and makes trade-offs, consequences, and risks visible, including what is required versus what improves resiliency. With that clarity, elected officials can approve the desired service level and risk tolerance, along with the rates, budgets, and debt needed to support it.

Required

Baseline service and regulatory compliance.

Responsible

Maintain assets and reduce preventable failures.

Resilient

Economic development support opportunities



SANITARY SEWER

Levels of Service for the Sanitary Sewer Enterprise Fund

	Required	Responsible	Resilient
Meaning	Compliance + Emergencies	Reliability + Performance	Future Readiness + Sustainability
Examples	<ul style="list-style-type: none">• Permit and Consent Decree requirements• Emergency response• Required monitoring and reporting	<ul style="list-style-type: none">• Pump station rehabilitation and reliability upgrades• Live observation and monitoring• System maintenance• Long-term capital improvement planning	<ul style="list-style-type: none">• Capacity improvements for growth and peak events• Redundancy for critical assets (power, pumping, treatment)• Inflow and infiltration reduction to lower long-term risk• Economic development support opportunities

SANITARY SEWER RATES

Rate Options Based on Levels of Service

	Scenario A (Not Compliant)		Scenario B (Required)		Scenario C (Responsible)	
Year	July 2026	2027	May 1, 2026	2027	July 2026	2027
Rate	0%	+4%	+0.5 - 1.5%	+6.5 - 7.5%	+1 - 2.5%	+7.5-8.5%
Average Monthly Household Increase	-	-	\$0.56	\$3.97	\$1.13	\$4.61
What Customers Get	<ul style="list-style-type: none"> • Supports Monitoring and Reporting Non-Compliance • Deferred Maintenance backlog • Supports \$124M total in Debt Authority 		<ul style="list-style-type: none"> • Supports all Scenario A Activities • Meets Consent Decree • Planned Construction, Permitting, Regulatory Requirements & Compliance • Long-term Kaw Point Facility Plan • Increased cash investment of \$4.5M for emergency repairs and inspection • Total debt authority increases to \$140M 		<ul style="list-style-type: none"> • Supports all Scenario A & B Activities • Supports cash investment of \$4M for long term facility and service studies for the STAR bond sewer sheds to prepare for development demands that affect Treatment Plans 20 and Wolcott 	

STORMWATER

Levels of Service for the Stormwater Enterprise Fund

	Required	Responsible	Resilient
Meaning	Compliance + Emergencies	Reliability + Performance	Future Readiness + Sustainability
Examples	<ul style="list-style-type: none">• MS4 permit obligations and inspections• Fix emergency drainage hazards and failures• Clear inlets when flooding threatens safety	<ul style="list-style-type: none">• Routine inlet and channel cleaning programs• Planned culvert and pipe rehabilitation• Regular maintenance• Long-term capital improvement planning	<ul style="list-style-type: none">• Flood mitigation in repeat problem areas• Prepare systems for changing rainfall patterns• Long-term watershed and resilience investments• Long-term economic development support opportunities

STORMWATER RATES

Rate Options Based on Levels of Service

	Scenario A (Required)		Scenario B (Responsible)		Scenario C (Resilient)	
Year	2026	2027	May 1, 2026	2027	July 2026	2027
Rate	0%		+0.5 - 1.5%	+6.5-7.5%	+1 - 2%	+7.5-8.5%
What Customers Get	<ul style="list-style-type: none"> • Supports regulatory compliance of the MS4 Permit • Deferred maintenance backlog • Emergency response 		<ul style="list-style-type: none"> • Supports all Scenario A activities • Supports obtaining grant funding • Supports increased cash investment of \$1M for emergency and high priority repairs • Supports cash investment of \$1M for inspections as matching funds for Watershed Planning Assistance Study • Supports maintenance • Supports long-term capital improvement 		<ul style="list-style-type: none"> • Supports all Scenario A & B activities • Supports cash investment of \$2M for Watershed Planning and Deficiencies Study for the STAR Bond watershed to prepare for development demands • Long-term economic development support opportunities 	

SOLID WASTE

Solid Waste rate setting is different.

Solid Waste

Equity & allocation
Determine who pays which costs

Central Question

How should costs be shared between
customer groups?



CHALLENGES

01

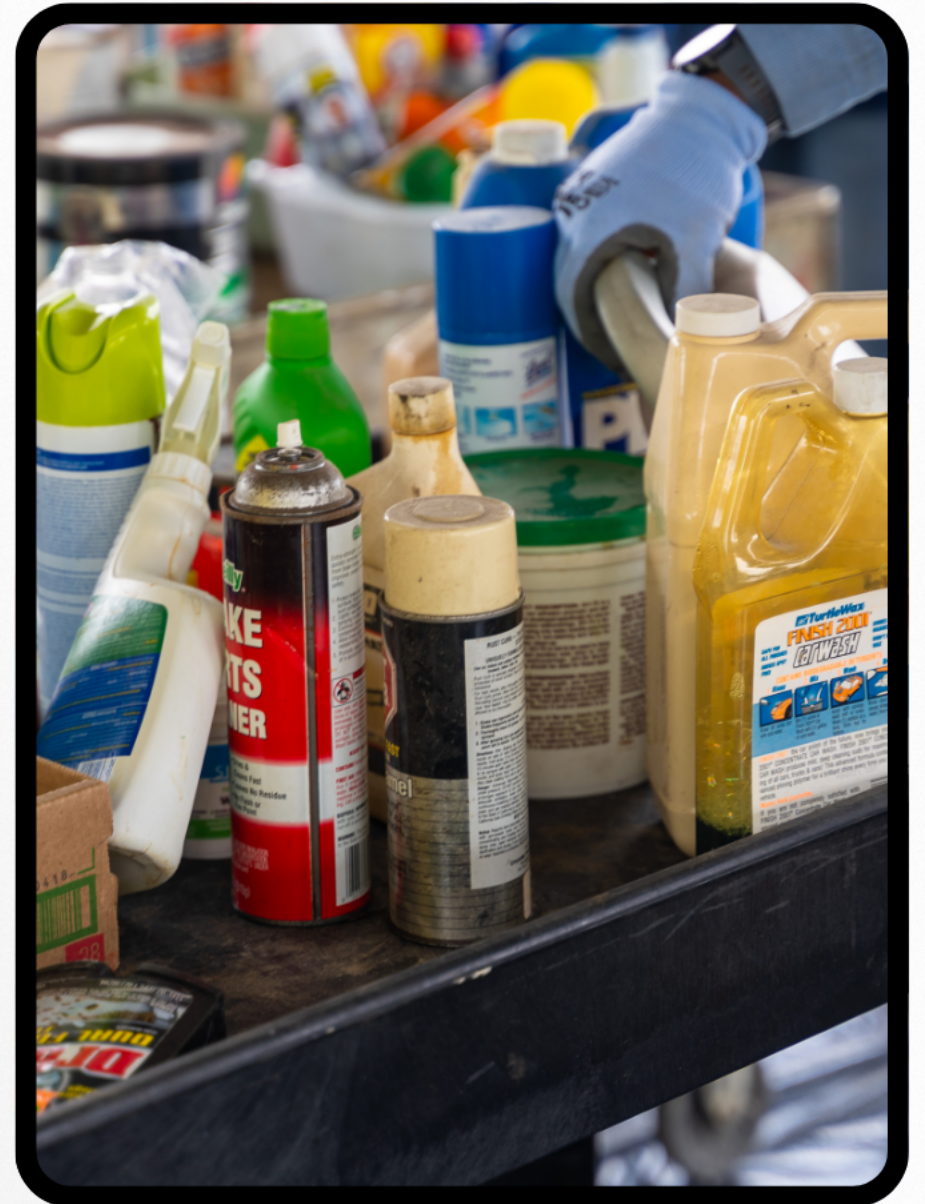
Costs in Residential Rates

- FY 2026 impact: **\$669,000**
- Equivalent: **\$1.11 per household per month**
- Includes:
 - City facility collection
 - City department waste and illegal dumping disposal
 - Graffiti clean up

02

Costs Not Fully Recovered

- FY 2026 cost (Bonner Springs and Edwardsville): **\$62,113**
- Real charge: **\$208.08 per visit**
- Current charge: **\$3.54 per visit**



RATE DECISIONS



Solid Waste



Stormwater



Sanitary Sewer



SOLID WASTE

How Costs are Shared in the Rate

	Scenario A	Scenario B	Scenario C
Policy Outcome	KCK residents fund all services	KCK residents do not fund internal city services	Bonner Springs & Edwardsville pay cost of services
2026 Rate	\$20.15	\$20.15	\$20.15
2027 Rate	\$21.46	\$20.15	\$21.35
2027 Change	+\$1.31	+\$0.00	\$1.20

STORMWATER RATES

Rate Options Based on Levels of Service

	Scenario A (Required)		Scenario B (Responsible)		Scenario C (Resilient)	
Year	2026	2027	May 1, 2026	2027	July 2026	2027
Rate	0%		+0.5 - 1.5%	+6.5-7.5%	+1 - 2%	+7.5-8.5%
What Customers Get	<ul style="list-style-type: none"> • Supports regulatory compliance of the MS4 Permit • Deferred maintenance backlog • Emergency response 		<ul style="list-style-type: none"> • Supports all Scenario A activities • Supports obtaining grant funding • Supports increased cash investment of \$1M for emergency and high priority repairs • Supports cash investment of \$1M for inspections as matching funds for Watershed Planning Assistance Study • Supports maintenance • Supports long-term capital improvement 		<ul style="list-style-type: none"> • Supports all Scenario A & B activities • Supports cash investment of \$2M for Watershed Planning and Deficiencies Study for the STAR Bond watershed to prepare for development demands • Long-term economic development support opportunities 	

SANITARY SEWER RATES

Rate Options Based on Levels of Service

	Scenario A (Not Compliant)		Scenario B (Required)		Scenario C (Responsible)	
Year	July 2026	2027	May 1, 2026	2027	July 2026	2027
Rate	0%	+4%	+0.5 - 1.5%	+6.5 - 7.5%	+1 - 2.5%	+7.5-8.5%
Average Monthly Household Increase	-	-	\$0.56	\$3.97	\$1.13	\$4.61
What Customers Get	<ul style="list-style-type: none"> • Supports Monitoring and Reporting Non-Compliance • Deferred Maintenance backlog • Supports \$124M total in Debt Authority 		<ul style="list-style-type: none"> • Supports all Scenario A Activities • Meets Consent Decree • Planned Construction, Permitting, Regulatory Requirements & Compliance • Long-term Kaw Point Facility Plan • Increased cash investment of \$4.5M for emergency repairs and inspection • Total debt authority increases to \$140M 		<ul style="list-style-type: none"> • Supports all Scenario A & B Activities • Supports cash investment of \$4M for long term facility and service studies for the STAR bond sewer sheds to prepare for development demands that affect Treatment Plans 20 and Wolcott 	



Report to Public Works & Safety Standing Committee

MEETING DATE	PRESENTER	DEPARTMENT
	<div data-bbox="586 386 1036 478" style="border: 1px solid black; padding: 5px;"> Troy Shaw, County Engineer/ Director of Public Works </div> tshaw@wycokck.org x5416	Public Works
AGENDA ITEM #4.3.		
PRESENTATION: SANITARY SEWER UTILITY RATES		
BACKGROUND		
<p>The Public Works Department is requesting to present the enterprise utility fund rate approval process separately from the general fund mill levy to allow focused discussion on the sanitary sewer utility's requirements, needs, and long-term goals. These goals include meeting regulatory obligations, maintaining transparency and equity for ratepayers, ensuring fiscal and fiduciary responsibility, and minimizing generational debt while supporting sustainable development.</p> <p>The Unified Government of Wyandotte County and Kansas City, Kansas (UG) established the sanitary sewer utility to fund the programming, operations, maintenance, and capital improvements necessary to collect and treat sanitary and combined sewer flows. As a highly regulated utility operating under consent decrees, the sanitary sewer enterprise relies on an existing financial model and rate structure to guide proposed 2026 and 2027 revenue goals.</p> <p>Public Works will present three level-of-service options for Commission consideration, each outlining specific regulatory permitting requirements, projects, and studies. The associated budget will be submitted during the 2026 amended and 2027 budget process.</p>		
RECOMMENDATION		
<p>Approve</p> <p>Approval to move forward to the Full Commission Meeting. At the Full Commission Meeting, Public Works will request approval for selecting one option.</p>		
BUDGET IMPACTS / FINANCIAL CONSIDERATIONS		
N/A		
LEGAL/ POLICY CONSIDERATIONS		
N/A		
ATTACHMENTS		
03.6.2026-Enterprise-Rates-Deck		

Approved by Mayor/Administrator to add to agenda.



Enterprise Fund Rates

BUDGET DIRECTION

Sewer, Stormwater & Solid Waste



Public Works & Safety Standing Committee

March 16, 2026

DECISIONS

01

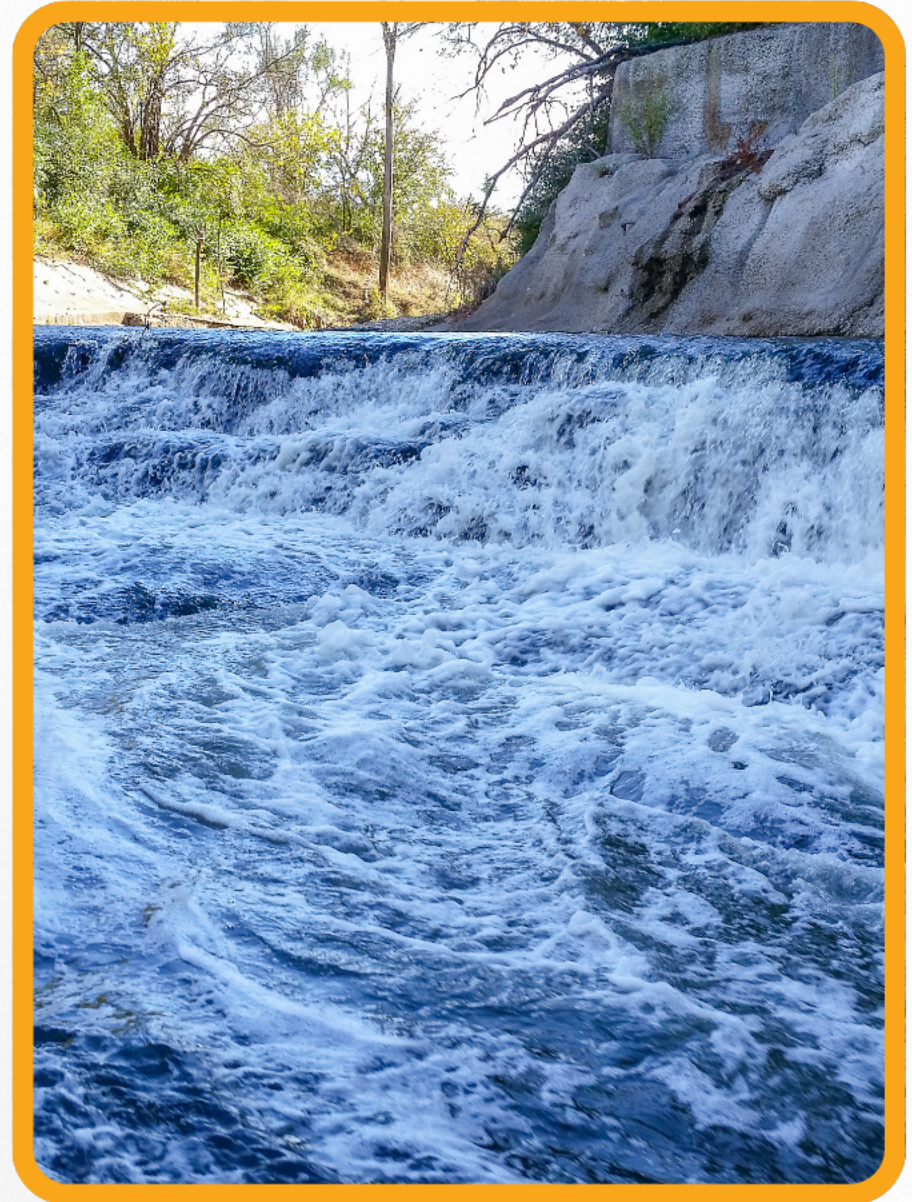
Separate Enterprise Rate Approvals from the Budget Process

- **General Fund:** Allocates tax dollars across many services.
- **Enterprise Funds:** Set service levels paid for by user charges.

02

Provide Rate Direction

- Select desired service level (Required, Responsible, Resilient)
- Set 2026-2027 rates for Wastewater, Stormwater & Solid Waste.



LEVELS OF SERVICE



A **Levels of Service** approach focuses resources around **agreed-upon goals and replaces “intuition” with clear service expectations**. It links service choices to costs and makes trade-offs, consequences, and risks visible, including what is required versus what improves resiliency. With that clarity, elected officials can approve the desired service level and risk tolerance, along with the rates, budgets, and debt needed to support it.

Required

Baseline service and regulatory compliance.

Responsible

Maintain assets and reduce preventable failures.

Resilient

Economic development support opportunities



SANITARY SEWER

Levels of Service for the Sanitary Sewer Enterprise Fund

	Required	Responsible	Resilient
Meaning	Compliance + Emergencies	Reliability + Performance	Future Readiness + Sustainability
Examples	<ul style="list-style-type: none">• Permit and Consent Decree requirements• Emergency response• Required monitoring and reporting	<ul style="list-style-type: none">• Pump station rehabilitation and reliability upgrades• Live observation and monitoring• System maintenance• Long-term capital improvement planning	<ul style="list-style-type: none">• Capacity improvements for growth and peak events• Redundancy for critical assets (power, pumping, treatment)• Inflow and infiltration reduction to lower long-term risk• Economic development support opportunities

SANITARY SEWER RATES

Rate Options Based on Levels of Service

	Scenario A (Not Compliant)		Scenario B (Required)		Scenario C (Responsible)	
Year	July 2026	2027	May 1, 2026	2027	July 2026	2027
Rate	0%	+4%	+0.5 - 1.5%	+6.5 - 7.5%	+1 - 2.5%	+7.5-8.5%
Average Monthly Household Increase	-	-	\$0.56	\$3.97	\$1.13	\$4.61
What Customers Get	<ul style="list-style-type: none"> • Supports Monitoring and Reporting Non-Compliance • Deferred Maintenance backlog • Supports \$124M total in Debt Authority 		<ul style="list-style-type: none"> • Supports all Scenario A Activities • Meets Consent Decree • Planned Construction, Permitting, Regulatory Requirements & Compliance • Long-term Kaw Point Facility Plan • Increased cash investment of \$4.5M for emergency repairs and inspection • Total debt authority increases to \$140M 		<ul style="list-style-type: none"> • Supports all Scenario A & B Activities • Supports cash investment of \$4M for long term facility and service studies for the STAR bond sewer sheds to prepare for development demands that affect Treatment Plans 20 and Wolcott 	

STORMWATER

Levels of Service for the Stormwater Enterprise Fund

	Required	Responsible	Resilient
Meaning	Compliance + Emergencies	Reliability + Performance	Future Readiness + Sustainability
Examples	<ul style="list-style-type: none">• MS4 permit obligations and inspections• Fix emergency drainage hazards and failures• Clear inlets when flooding threatens safety	<ul style="list-style-type: none">• Routine inlet and channel cleaning programs• Planned culvert and pipe rehabilitation• Regular maintenance• Long-term capital improvement planning	<ul style="list-style-type: none">• Flood mitigation in repeat problem areas• Prepare systems for changing rainfall patterns• Long-term watershed and resilience investments• Long-term economic development support opportunities

STORMWATER RATES

Rate Options Based on Levels of Service

	Scenario A (Required)		Scenario B (Responsible)		Scenario C (Resilient)	
Year	2026	2027	May 1, 2026	2027	July 2026	2027
Rate	0%		+0.5 - 1.5%	+6.5-7.5%	+1 - 2%	+7.5-8.5%
What Customers Get	<ul style="list-style-type: none"> • Supports regulatory compliance of the MS4 Permit • Deferred maintenance backlog • Emergency response 		<ul style="list-style-type: none"> • Supports all Scenario A activities • Supports obtaining grant funding • Supports increased cash investment of \$1M for emergency and high priority repairs • Supports cash investment of \$1M for inspections as matching funds for Watershed Planning Assistance Study • Supports maintenance • Supports long-term capital improvement 		<ul style="list-style-type: none"> • Supports all Scenario A & B activities • Supports cash investment of \$2M for Watershed Planning and Deficiencies Study for the STAR Bond watershed to prepare for development demands • Long-term economic development support opportunities 	

SOLID WASTE

Solid Waste rate setting is different.

Solid Waste

Equity & allocation
Determine who pays which costs

Central Question

How should costs be shared between customer groups?



CHALLENGES

01

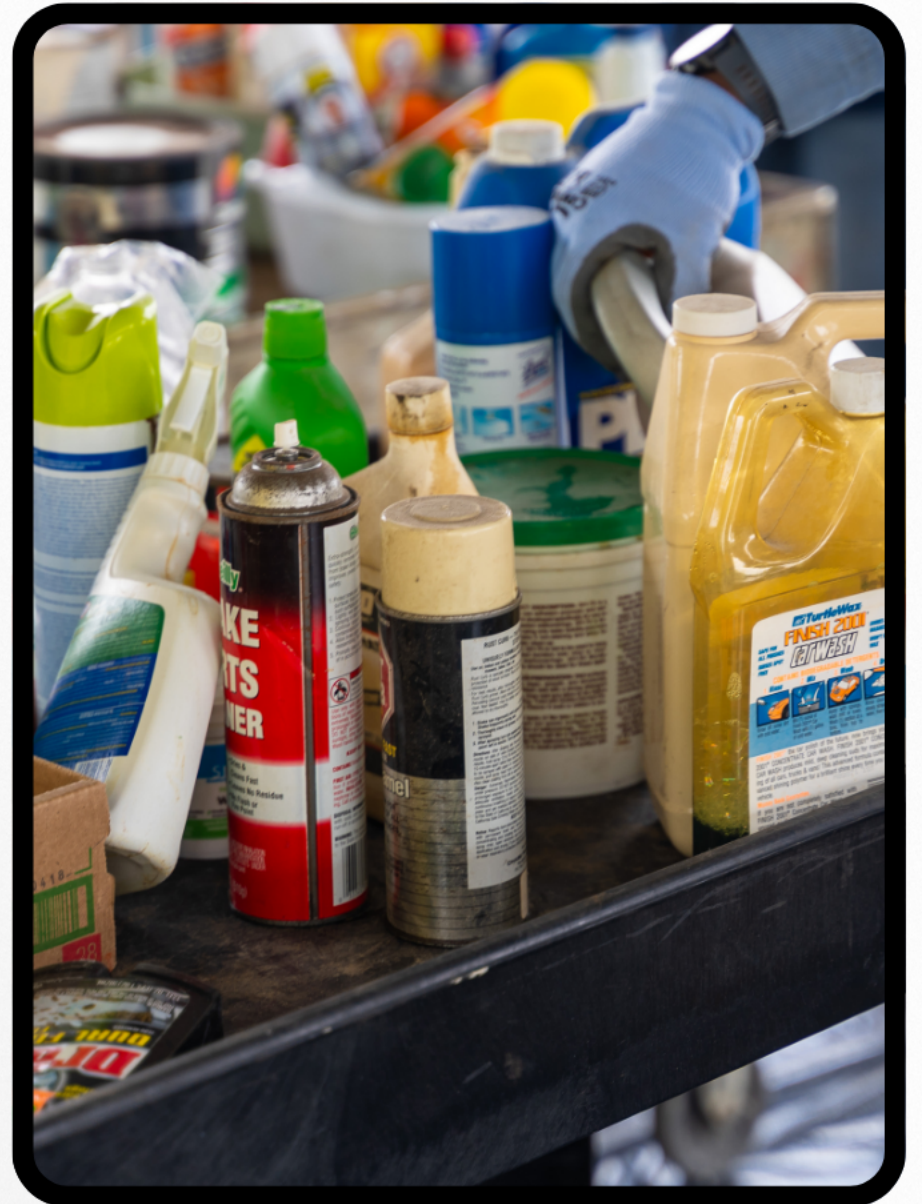
Costs in Residential Rates

- FY 2026 impact: **\$669,000**
- Equivalent: **\$1.11 per household per month**
- Includes:
 - City facility collection
 - City department waste and illegal dumping disposal
 - Graffiti clean up

02

Costs Not Fully Recovered

- FY 2026 cost (Bonner Springs and Edwardsville): **\$62,113**
- Real charge: **\$208.08 per visit**
- Current charge: **\$3.54 per visit**



RATE DECISIONS



Solid Waste



Stormwater



Sanitary Sewer



SOLID WASTE

How Costs are Shared in the Rate

	Scenario A	Scenario B	Scenario C
Policy Outcome	KCK residents fund all services	KCK residents do not fund internal city services	Bonner Springs & Edwardsville pay cost of services
2026 Rate	\$20.15	\$20.15	\$20.15
2027 Rate	\$21.46	\$20.15	\$21.35
2027 Change	+\$1.31	+\$0.00	\$1.20

STORMWATER RATES

Rate Options Based on Levels of Service

	Scenario A (Required)		Scenario B (Responsible)		Scenario C (Resilient)	
Year	2026	2027	May 1, 2026	2027	July 2026	2027
Rate	0%		+0.5 - 1.5%	+6.5-7.5%	+1 - 2%	+7.5-8.5%
What Customers Get	<ul style="list-style-type: none"> • Supports regulatory compliance of the MS4 Permit • Deferred maintenance backlog • Emergency response 		<ul style="list-style-type: none"> • Supports all Scenario A activities • Supports obtaining grant funding • Supports increased cash investment of \$1M for emergency and high priority repairs • Supports cash investment of \$1M for inspections as matching funds for Watershed Planning Assistance Study • Supports maintenance • Supports long-term capital improvement 		<ul style="list-style-type: none"> • Supports all Scenario A & B activities • Supports cash investment of \$2M for Watershed Planning and Deficiencies Study for the STAR Bond watershed to prepare for development demands • Long-term economic development support opportunities 	

SANITARY SEWER RATES

Rate Options Based on Levels of Service

	Scenario A (Not Compliant)		Scenario B (Required)		Scenario C (Responsible)	
Year	July 2026	2027	May 1, 2026	2027	July 2026	2027
Rate	0%	+4%	+0.5 - 1.5%	+6.5 - 7.5%	+1 - 2.5%	+7.5-8.5%
Average Monthly Household Increase	-	-	\$0.56	\$3.97	\$1.13	\$4.61
What Customers Get	<ul style="list-style-type: none"> • Supports Monitoring and Reporting Non-Compliance • Deferred Maintenance backlog • Supports \$124M total in Debt Authority 		<ul style="list-style-type: none"> • Supports all Scenario A Activities • Meets Consent Decree • Planned Construction, Permitting, Regulatory Requirements & Compliance • Long-term Kaw Point Facility Plan • Increased cash investment of \$4.5M for emergency repairs and inspection • Total debt authority increases to \$140M 		<ul style="list-style-type: none"> • Supports all Scenario A & B Activities • Supports cash investment of \$4M for long term facility and service studies for the STAR bond sewer sheds to prepare for development demands that affect Treatment Plans 20 and Wolcott 	



Report to Public Works & Safety Standing Committee

MEETING DATE	PRESENTER	DEPARTMENT
	<div style="border: 1px solid black; padding: 5px; margin-bottom: 5px;">Troy Shaw, County Engineer/ Director of Public Works</div> tshaw@wycokck.org x5416	Public Works
AGENDA ITEM #4.4.		
PRESENTATION: SOLID WASTE UTILITY RATES		
BACKGROUND		
<p>The Public Works Department will present the solid waste utility rate approval process separately from the general fund mill levy to allow for a focused discussion on rate equity and cost allocation within the solid waste utility. The objective is to evaluate how costs should be distributed equitably among customer groups.</p> <p>Public Works will present three options for Commission consideration. The associated budget will be submitted during the 2026 amended and 2027 budget process.</p>		
RECOMMENDATION		
<p>Approve</p> <p>Approval of moving forward to the Full Commission Meeting. At the Full Commission Meeting, Public Works will request approval for selecting one option.</p>		
BUDGET IMPACTS / FINANCIAL CONSIDERATIONS		
N/A		
LEGAL/ POLICY CONSIDERATIONS		
N/A		
ATTACHMENTS		
03.6.2026-Enterprise-Rates-Deck		

Approved by Mayor/Administrator to add to agenda.



Enterprise Fund Rates

BUDGET DIRECTION

Sewer, Stormwater & Solid Waste



Public Works & Safety Standing Committee

March 16, 2026

DECISIONS

01

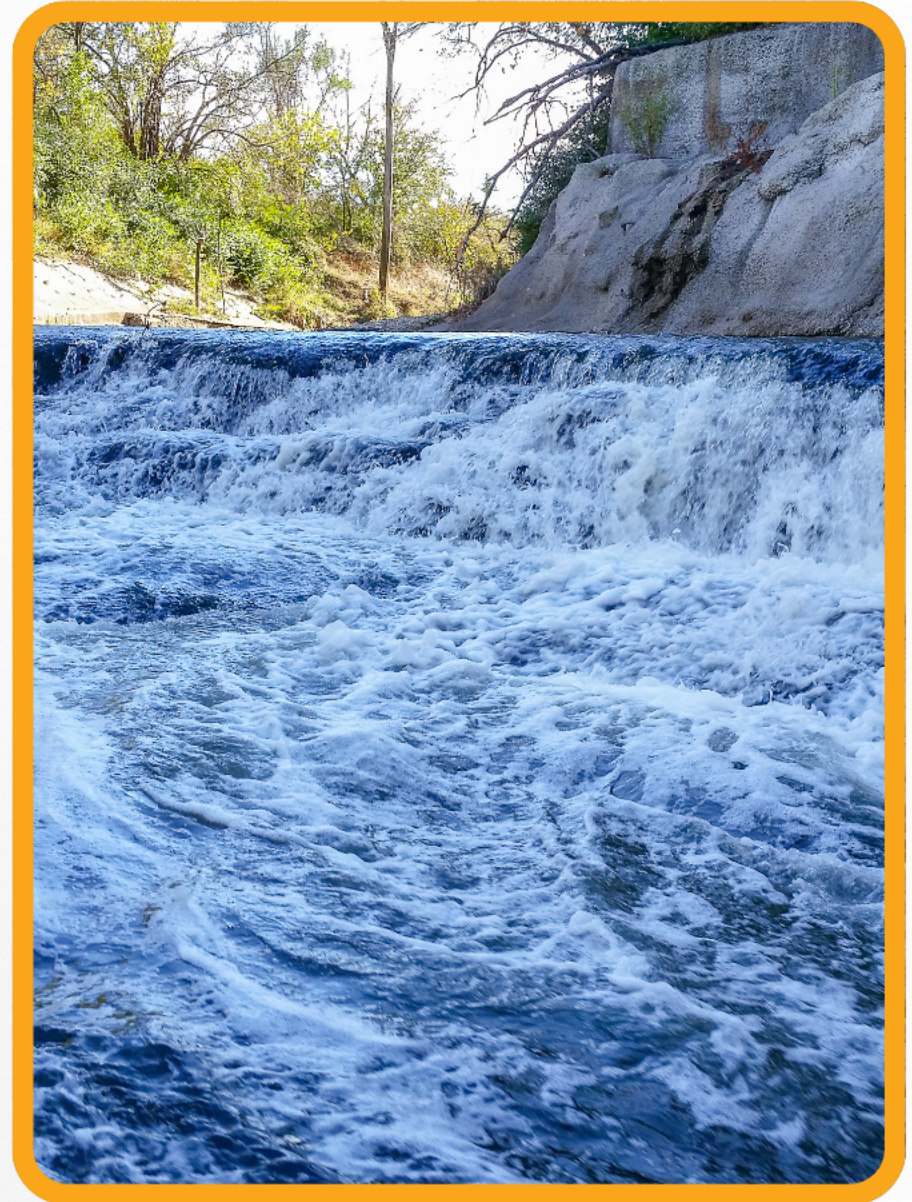
Separate Enterprise Rate Approvals from the Budget Process

- **General Fund:** Allocates tax dollars across many services.
- **Enterprise Funds:** Set service levels paid for by user charges.

02

Provide Rate Direction

- Select desired service level (Required, Responsible, Resilient)
- Set 2026-2027 rates for Wastewater, Stormwater & Solid Waste.



LEVELS OF SERVICE



A **Levels of Service** approach focuses resources around **agreed-upon goals and replaces “intuition” with clear service expectations**. It links service choices to costs and makes trade-offs, consequences, and risks visible, including what is required versus what improves resiliency. With that clarity, elected officials can approve the desired service level and risk tolerance, along with the rates, budgets, and debt needed to support it.

Required

Baseline service and regulatory compliance.

Responsible

Maintain assets and reduce preventable failures.

Resilient

Economic development support opportunities



SANITARY SEWER

Levels of Service for the Sanitary Sewer Enterprise Fund

	Required	Responsible	Resilient
Meaning	Compliance + Emergencies	Reliability + Performance	Future Readiness + Sustainability
Examples	<ul style="list-style-type: none">• Permit and Consent Decree requirements• Emergency response• Required monitoring and reporting	<ul style="list-style-type: none">• Pump station rehabilitation and reliability upgrades• Live observation and monitoring• System maintenance• Long-term capital improvement planning	<ul style="list-style-type: none">• Capacity improvements for growth and peak events• Redundancy for critical assets (power, pumping, treatment)• Inflow and infiltration reduction to lower long-term risk• Economic development support opportunities

SANITARY SEWER RATES

Rate Options Based on Levels of Service

	Scenario A (Not Compliant)		Scenario B (Required)		Scenario C (Responsible)	
Year	July 2026	2027	May 1, 2026	2027	July 2026	2027
Rate	0%	+4%	+0.5 - 1.5%	+6.5 - 7.5%	+1 - 2.5%	+7.5-8.5%
Average Monthly Household Increase	-	-	\$0.56	\$3.97	\$1.13	\$4.61
What Customers Get	<ul style="list-style-type: none"> • Supports Monitoring and Reporting Non-Compliance • Deferred Maintenance backlog • Supports \$124M total in Debt Authority 		<ul style="list-style-type: none"> • Supports all Scenario A Activities • Meets Consent Decree • Planned Construction, Permitting, Regulatory Requirements & Compliance • Long-term Kaw Point Facility Plan • Increased cash investment of \$4.5M for emergency repairs and inspection • Total debt authority increases to \$140M 		<ul style="list-style-type: none"> • Supports all Scenario A & B Activities • Supports cash investment of \$4M for long term facility and service studies for the STAR bond sewer sheds to prepare for development demands that affect Treatment Plans 20 and Wolcott 	

STORMWATER

Levels of Service for the Stormwater Enterprise Fund

	Required	Responsible	Resilient
Meaning	Compliance + Emergencies	Reliability + Performance	Future Readiness + Sustainability
Examples	<ul style="list-style-type: none">• MS4 permit obligations and inspections• Fix emergency drainage hazards and failures• Clear inlets when flooding threatens safety	<ul style="list-style-type: none">• Routine inlet and channel cleaning programs• Planned culvert and pipe rehabilitation• Regular maintenance• Long-term capital improvement planning	<ul style="list-style-type: none">• Flood mitigation in repeat problem areas• Prepare systems for changing rainfall patterns• Long-term watershed and resilience investments• Long-term economic development support opportunities

STORMWATER RATES

Rate Options Based on Levels of Service

	Scenario A (Required)		Scenario B (Responsible)		Scenario C (Resilient)	
Year	2026	2027	May 1, 2026	2027	July 2026	2027
Rate	0%		+0.5 - 1.5%	+6.5-7.5%	+1 - 2%	+7.5-8.5%
What Customers Get	<ul style="list-style-type: none"> • Supports regulatory compliance of the MS4 Permit • Deferred maintenance backlog • Emergency response 		<ul style="list-style-type: none"> • Supports all Scenario A activities • Supports obtaining grant funding • Supports increased cash investment of \$1M for emergency and high priority repairs • Supports cash investment of \$1M for inspections as matching funds for Watershed Planning Assistance Study • Supports maintenance • Supports long-term capital improvement 		<ul style="list-style-type: none"> • Supports all Scenario A & B activities • Supports cash investment of \$2M for Watershed Planning and Deficiencies Study for the STAR Bond watershed to prepare for development demands • Long-term economic development support opportunities 	

SOLID WASTE

Solid Waste rate setting is different.

Solid Waste

Equity & allocation
Determine who pays which costs

Central Question

How should costs be shared between customer groups?



CHALLENGES

01

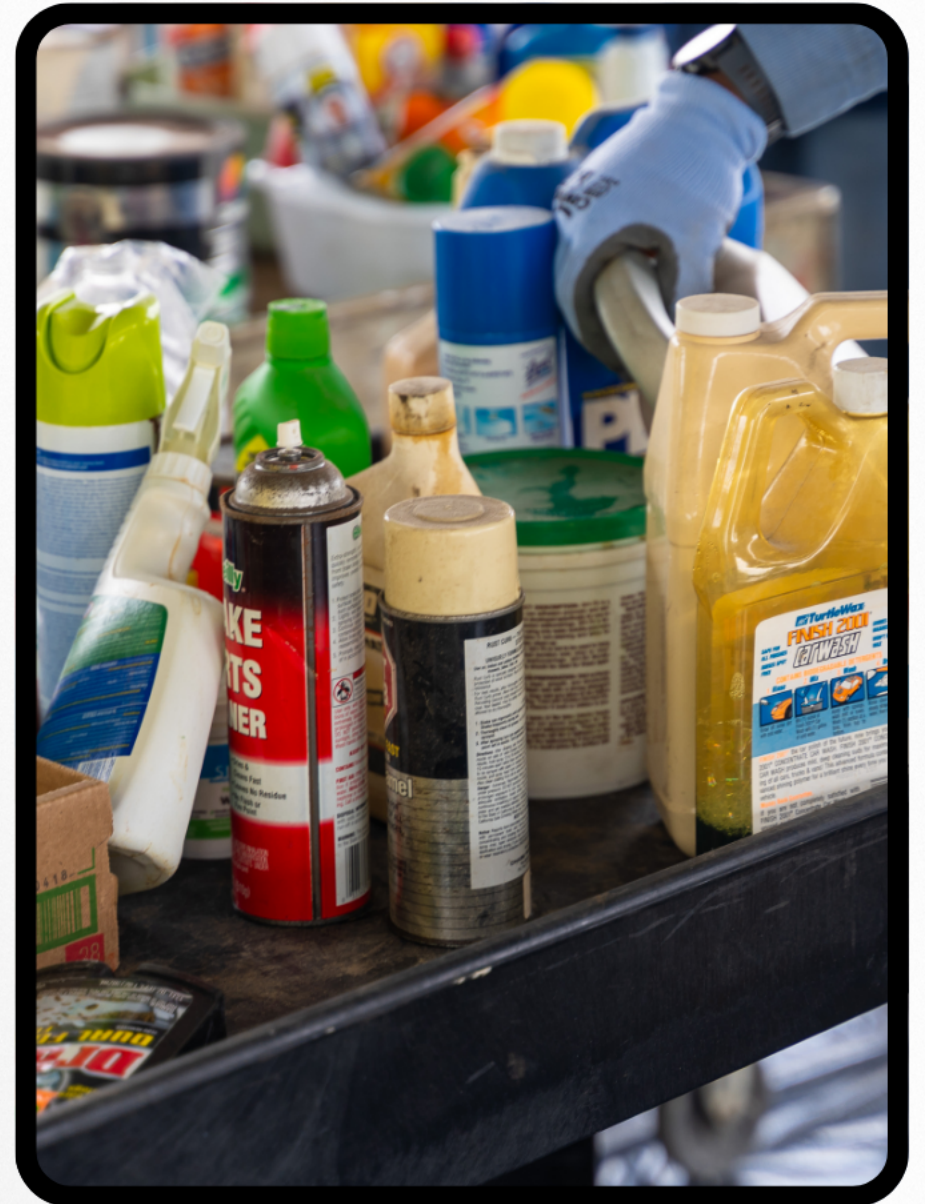
Costs in Residential Rates

- FY 2026 impact: **\$669,000**
- Equivalent: **\$1.11 per household per month**
- Includes:
 - City facility collection
 - City department waste and illegal dumping disposal
 - Graffiti clean up

02

Costs Not Fully Recovered

- FY 2026 cost (Bonner Springs and Edwardsville): **\$62,113**
- Real charge: **\$208.08 per visit**
- Current charge: **\$3.54 per visit**



RATE DECISIONS



Solid Waste



Stormwater



Sanitary Sewer



SOLID WASTE

How Costs are Shared in the Rate

	Scenario A	Scenario B	Scenario C
Policy Outcome	KCK residents fund all services	KCK residents do not fund internal city services	Bonner Springs & Edwardsville pay cost of services
2026 Rate	\$20.15	\$20.15	\$20.15
2027 Rate	\$21.46	\$20.15	\$21.35
2027 Change	+\$1.31	+\$0.00	\$1.20

STORMWATER RATES

Rate Options Based on Levels of Service

	Scenario A (Required)		Scenario B (Responsible)		Scenario C (Resilient)	
Year	2026	2027	May 1, 2026	2027	July 2026	2027
Rate	0%		+0.5 - 1.5%	+6.5-7.5%	+1 - 2%	+7.5-8.5%
What Customers Get	<ul style="list-style-type: none"> • Supports regulatory compliance of the MS4 Permit • Deferred maintenance backlog • Emergency response 		<ul style="list-style-type: none"> • Supports all Scenario A activities • Supports obtaining grant funding • Supports increased cash investment of \$1M for emergency and high priority repairs • Supports cash investment of \$1M for inspections as matching funds for Watershed Planning Assistance Study • Supports maintenance • Supports long-term capital improvement 		<ul style="list-style-type: none"> • Supports all Scenario A & B activities • Supports cash investment of \$2M for Watershed Planning and Deficiencies Study for the STAR Bond watershed to prepare for development demands • Long-term economic development support opportunities 	

SANITARY SEWER RATES

Rate Options Based on Levels of Service

	Scenario A (Not Compliant)		Scenario B (Required)		Scenario C (Responsible)	
Year	July 2026	2027	May 1, 2026	2027	July 2026	2027
Rate	0%	+4%	+0.5 - 1.5%	+6.5 - 7.5%	+1 - 2.5%	+7.5-8.5%
Average Monthly Household Increase	-	-	\$0.56	\$3.97	\$1.13	\$4.61
What Customers Get	<ul style="list-style-type: none"> • Supports Monitoring and Reporting Non-Compliance • Deferred Maintenance backlog • Supports \$124M total in Debt Authority 		<ul style="list-style-type: none"> • Supports all Scenario A Activities • Meets Consent Decree • Planned Construction, Permitting, Regulatory Requirements & Compliance • Long-term Kaw Point Facility Plan • Increased cash investment of \$4.5M for emergency repairs and inspection • Total debt authority increases to \$140M 		<ul style="list-style-type: none"> • Supports all Scenario A & B Activities • Supports cash investment of \$4M for long term facility and service studies for the STAR bond sewer sheds to prepare for development demands that affect Treatment Plans 20 and Wolcott 	



Report to Public Works & Safety Standing Committee

MEETING DATE	PRESENTER	DEPARTMENT
	<div style="border: 1px solid black; padding: 5px; margin-bottom: 5px;">Troy Shaw, County Engineer/ Director of Public Works</div> tshaw@wycokck.org x5416	Public Works
AGENDA ITEM #4.5.		
APPROVAL: MARC GRANT FUNDING		
BACKGROUND		
<p>BACKGROUND:</p> <ul style="list-style-type: none"> • After discussions with the CAO and Mayor’s Office, the Public Works Department wishes to inform the commission of the plan to submit for this round of grants through the Mid-American Regional Council (MARC). • Due to the short timeline on the grant submission (Information meeting held by MARC on 3/5 and grants are due by 3/20) we are planning on providing the commission with this initial information then, if awarded a grant, returning to the commission to accept the grant. • Exact projects are currently under review. We will be utilizing existing studies, previously requested projects, and previously unfunded projects as the starting point to compare which projects will best fit the criteria outlined in the MARC call for projects. • To select projects, we will be utilizing the scoring system approved by the commission a few years ago to rank projects, then take those rankings and compare them to the grant criteria. • POLICY CONSIDERATIONS: <ul style="list-style-type: none"> ○ Due to the short timeline, we are notifying the commission that we will be applying for projects and then, if awarded, we will be back to the commission to formally accept the grant. 		
RECOMMENDATION		
For information only		
BUDGET IMPACTS / FINANCIAL CONSIDERATIONS		
None at this time. If the commission elects to accept there will likely be a local match that will need to be committed to the project.		
LEGAL/ POLICY CONSIDERATIONS		
ATTACHMENTS		
PWS_3-16-26_MARC Grant Funding Project Submission		

Approved by Mayor/Administrator to add to agenda.

Commission Agenda Item Report

Title: MARC Grant Funding Project Submission
Proposed Agenda Date: Public Works and Safety Standing Committee (March 16th)
Presented by: Troy Shaw, Director of Public Works/County Engineer

BACKGROUND:

- After discussions with the CAO and Mayor’s Office Public Works Department wishes inform commission of the plan to submit for this round of grants through the Mid-American Regional Council (MARC).
- Due to the short timeline on the grant submission (Information meeting held by MARC on 3/5 and grants are due by 3/20) we are planning on providing commission with this initial information then if awarded a grant, returning to commission to accept the grant.
- Exact projects are currently under review. We will be utilizing existing studies, previously requested projects, and previously unfunded projects as the starting point to compare which projects will best fit the criteria outlined in the MARC call for projects.
- To select projects we will be utilizing the scoring system approved by commission a few years ago to rank projects then take those rankings and compare to the grant criteria.

BUDGET IMPACTS / FINANCIAL CONSIDERATIONS:

- None at this time. If the commission elects to accept there will likely be a local match that will need to be committed to the project.

POLICY CONSIDERATIONS:

- Due to the short timeline we are notifying the commission that we will be applying for projects and then, if awarded, we will be back to commission to formally accept the grant.

PROCUREMENT CONSIDERATIONS:

- None at this time.

LEGAL CONSIDERATIONS:

- None at this time.

RECOMMENDED ACTION:

- None. For information only.

COUNTY ADMINISTRATION COMMENTS:

-

MAYOR AGENDA DIRECTION:

-